

ASSEMBLY INSTRUCTIONS

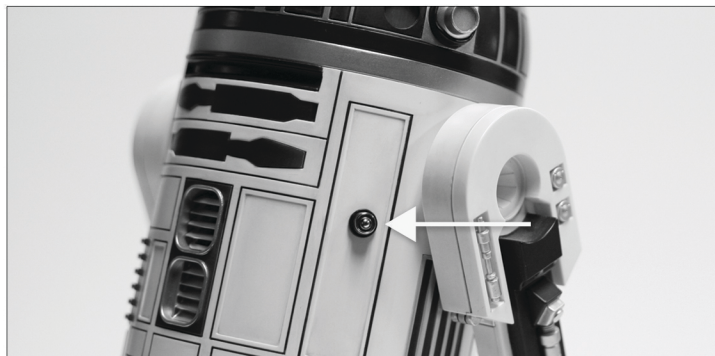
R2-D2™ PREMIUM FORMAT™ FIGURE

ATTENTION: PLEASE USE CAUTION DURING ASSEMBLY

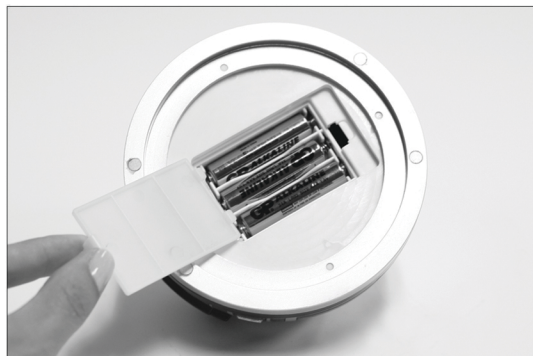
FOR FURTHER ASSISTANCE:

CALL US (WITHIN U.S.): 1-855-SIDESHOW

CALL US (OUTSIDE U.S.): 1-805-214-2157



R2-D2's restraining bolt magnetically attaches to the front panel.



LED light up components: Remove R2-D2's top dome to locate battery pack (Three AAA batteries have already been included).



LED light up components: To turn on the light up feature, push the center blue button on the top of R2-D2's dome.



R2-D2's areas of articulation indicated above.



SIDESHOW

For more information visit: SIDESHOW.COM/Instructions