

ASSEMBLY INSTRUCTIONS

SPEEDER BIKE™ - SIXTH SCALE FIGURE

ATTENTION: PLEASE USE CAUTION DURING ASSEMBLY

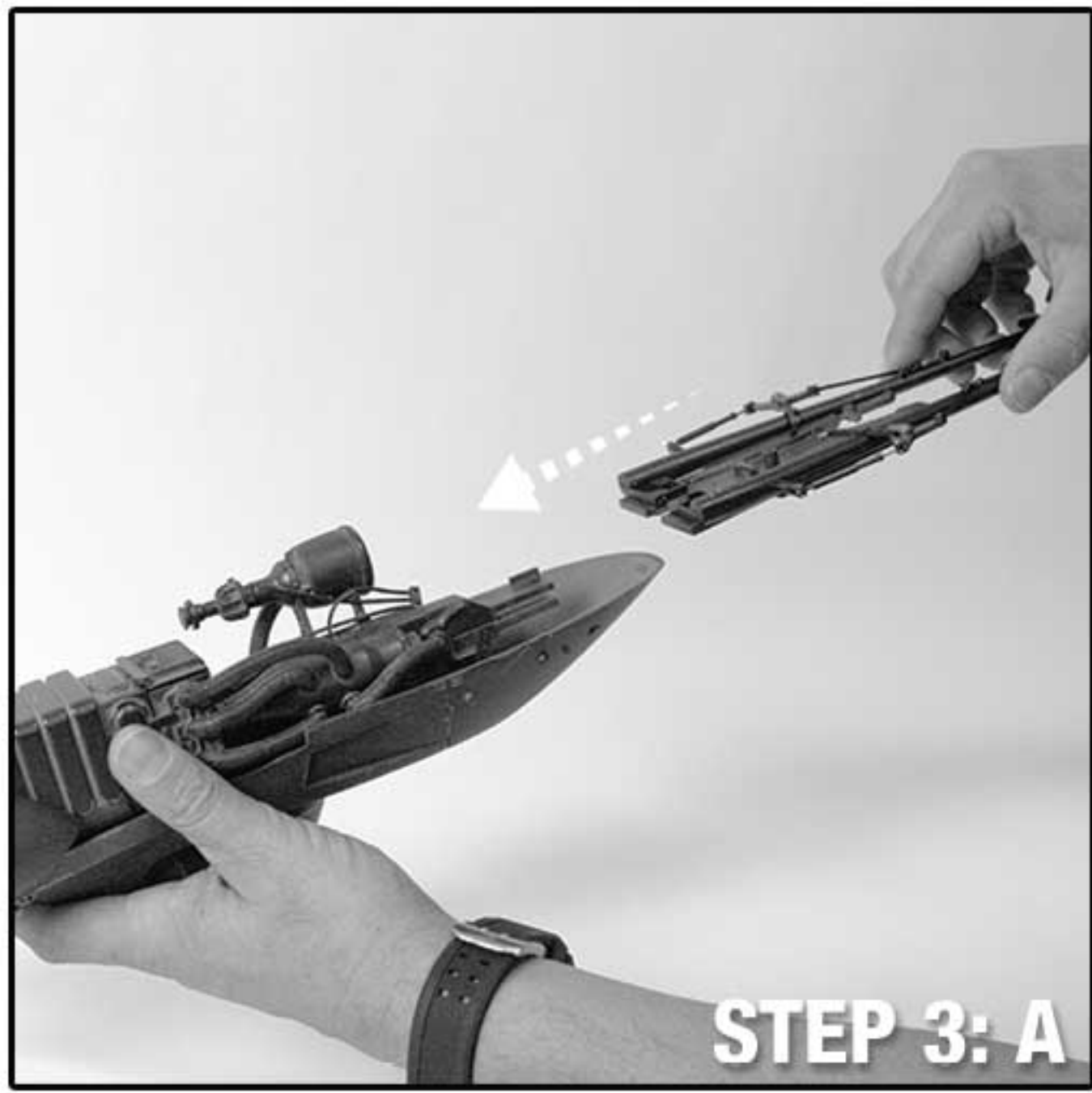
FOR FURTHER ASSISTANCE: CALL US (WITHIN U.S.): 1-855-SIDESHOW CALL US (OUTSIDE U.S.): 1-805-214-2157



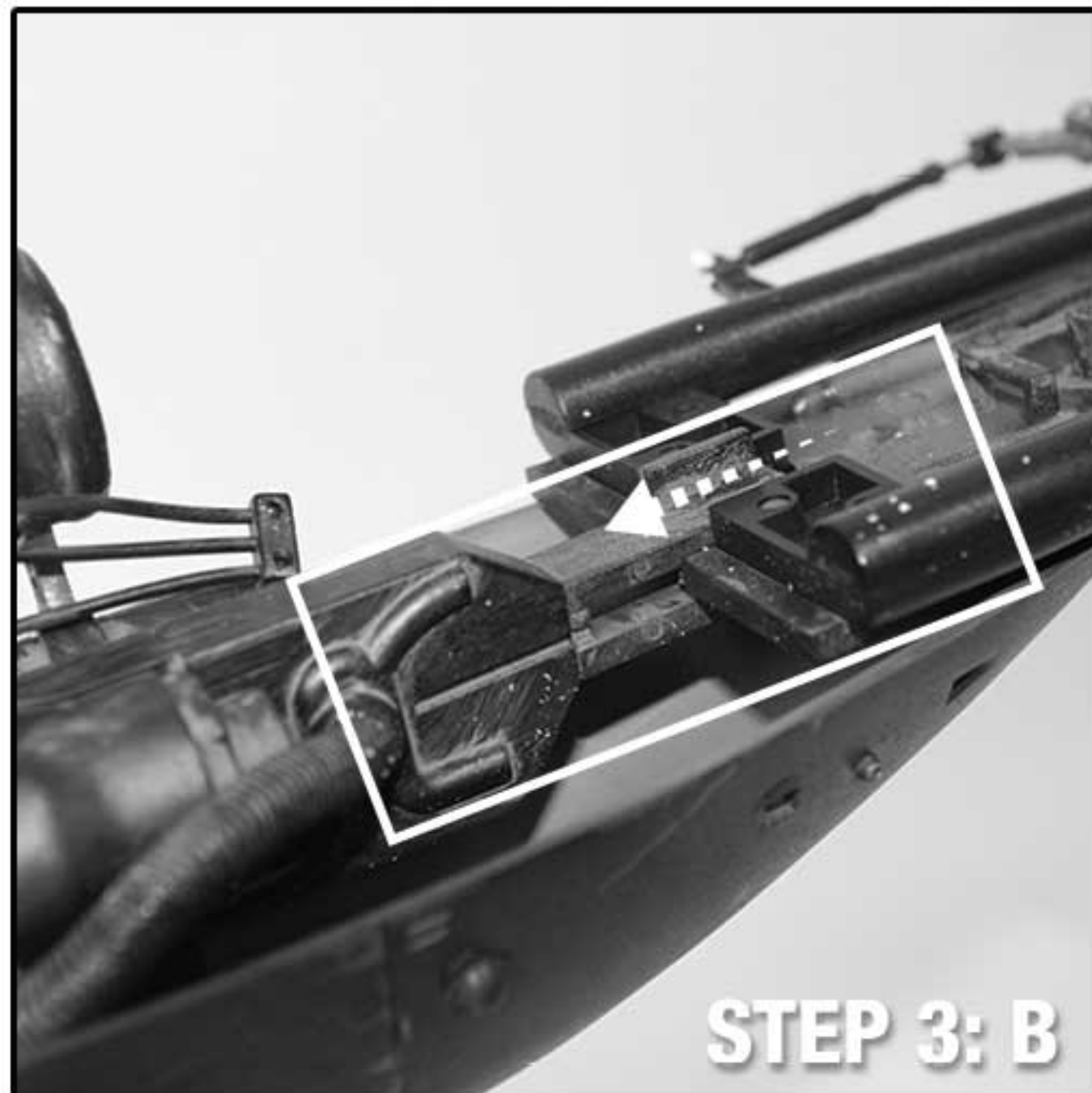
STEP 1: Insert support rod into the base stand.



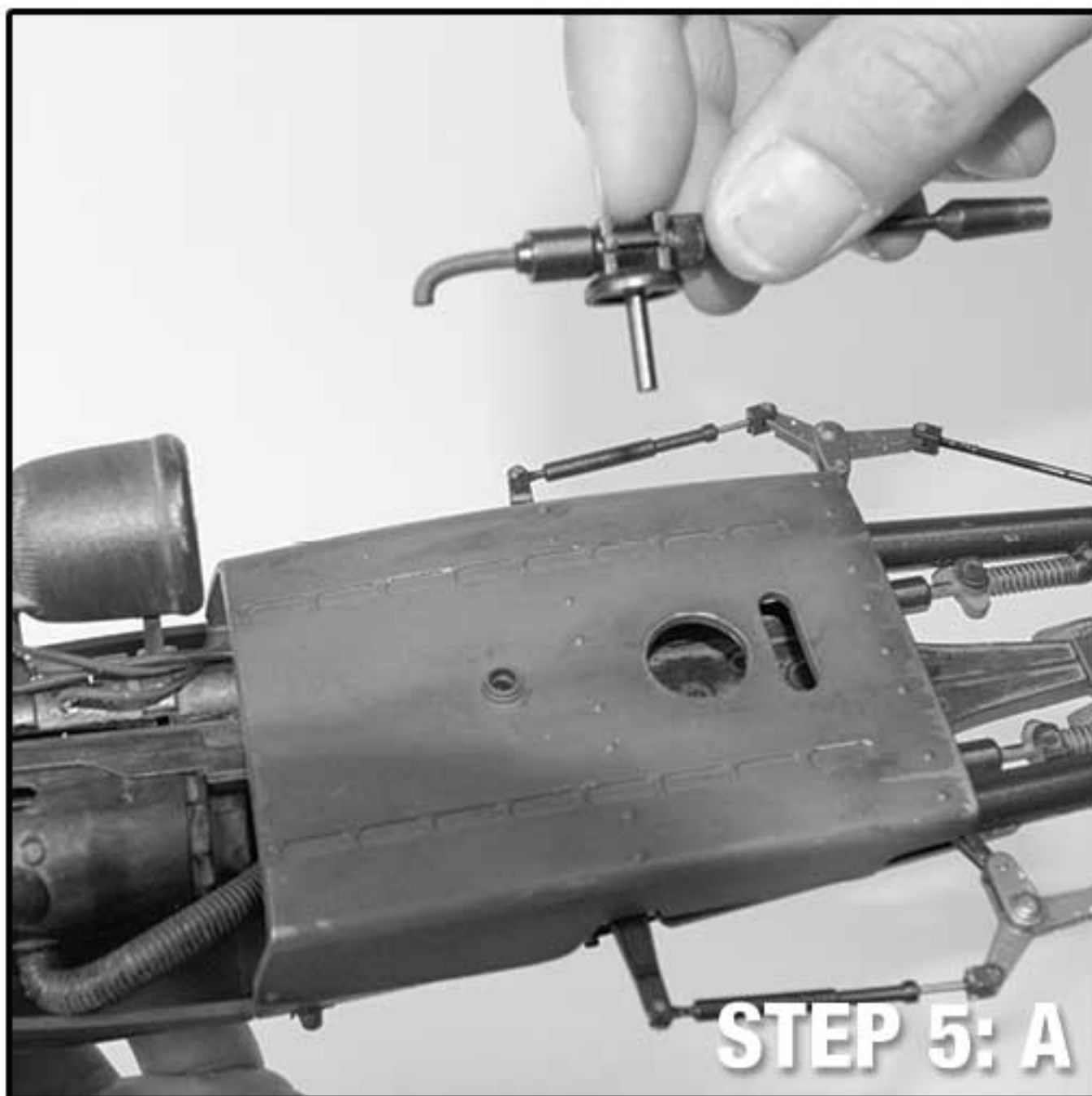
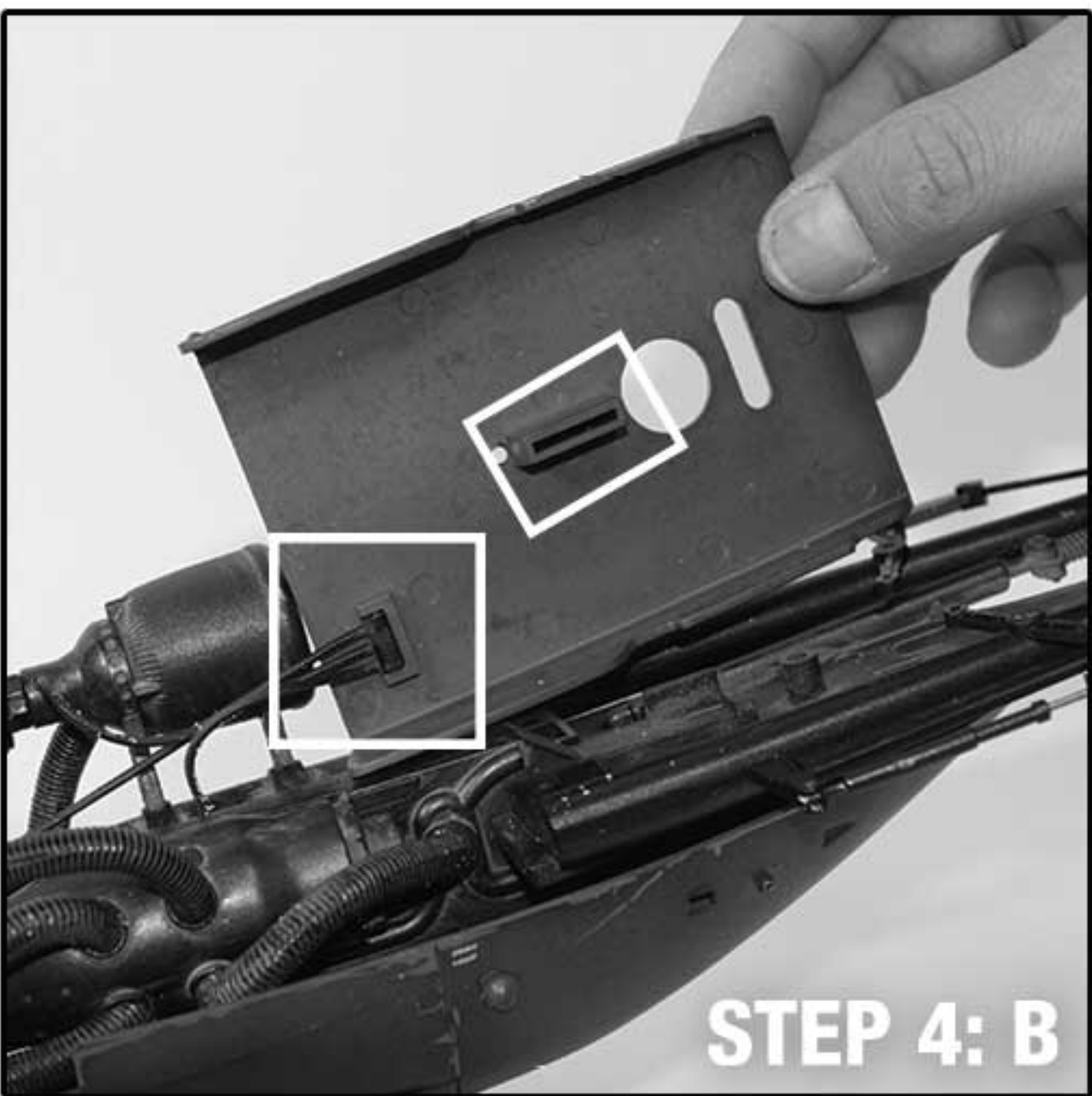
STEP 2: Place the plastic cap on top of the metal support rod. Ensure that both screw ends are parallel to the curve of the support rod.



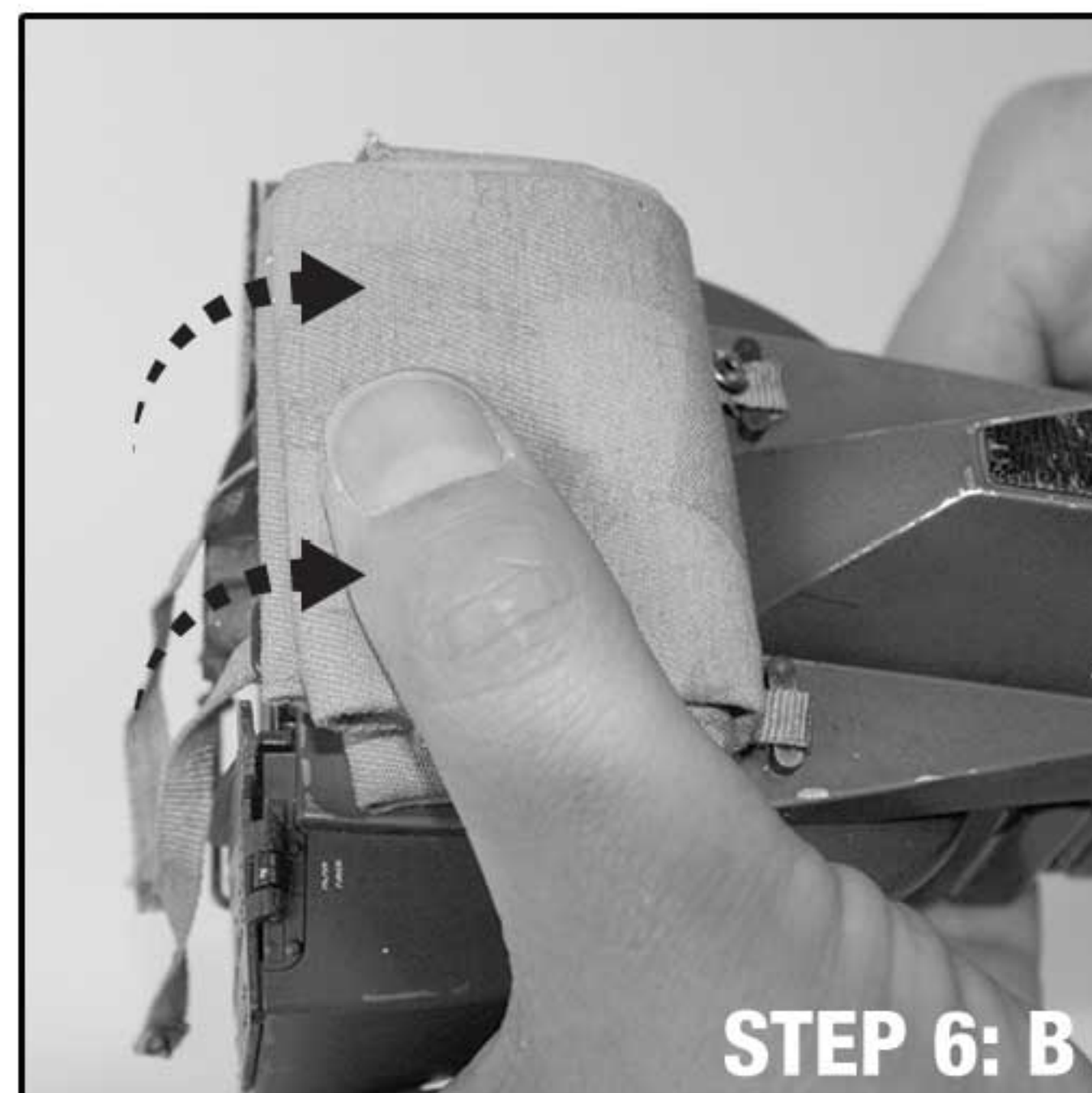
STEP 3: Slide the bottom outrigger into the long rectangular key of the hull.



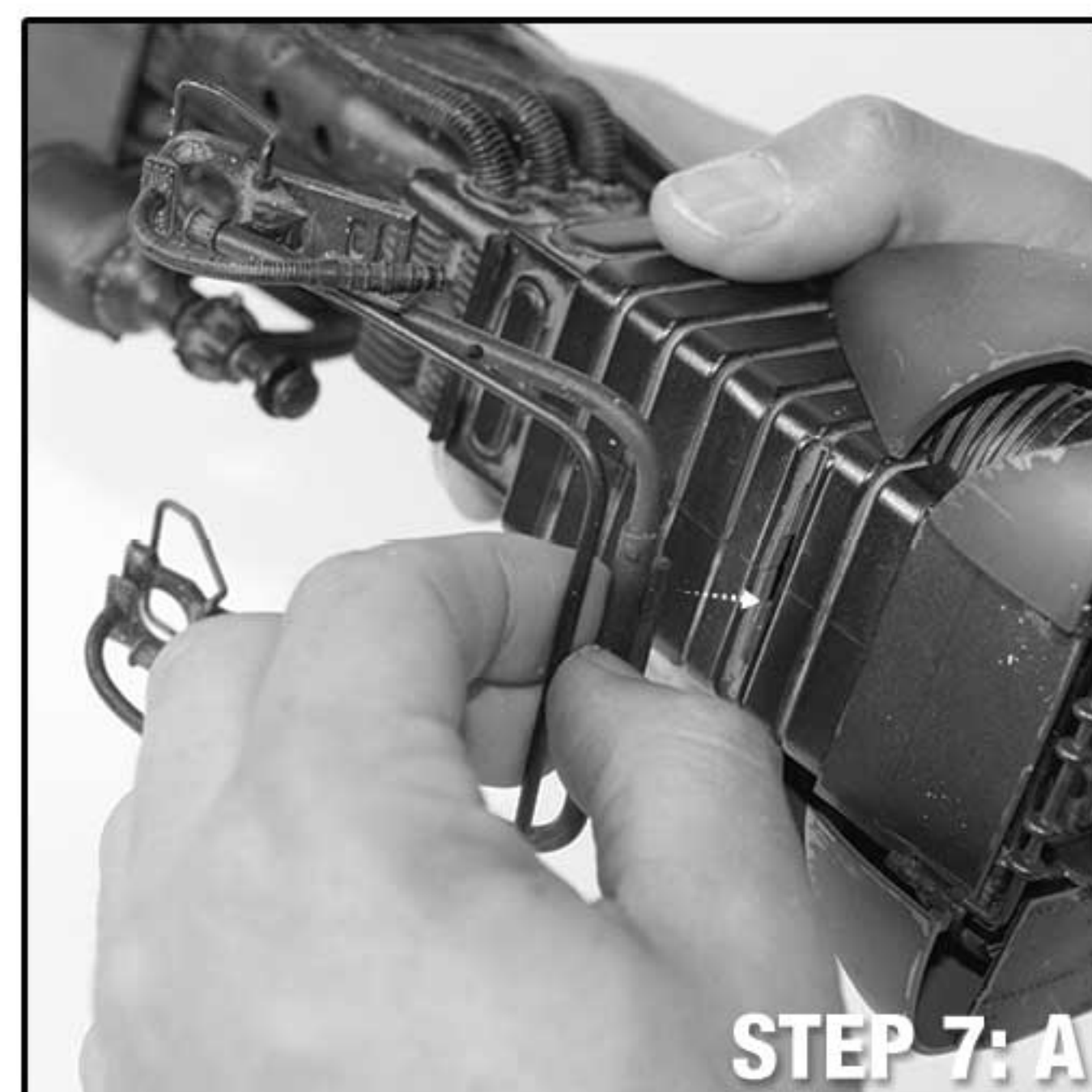
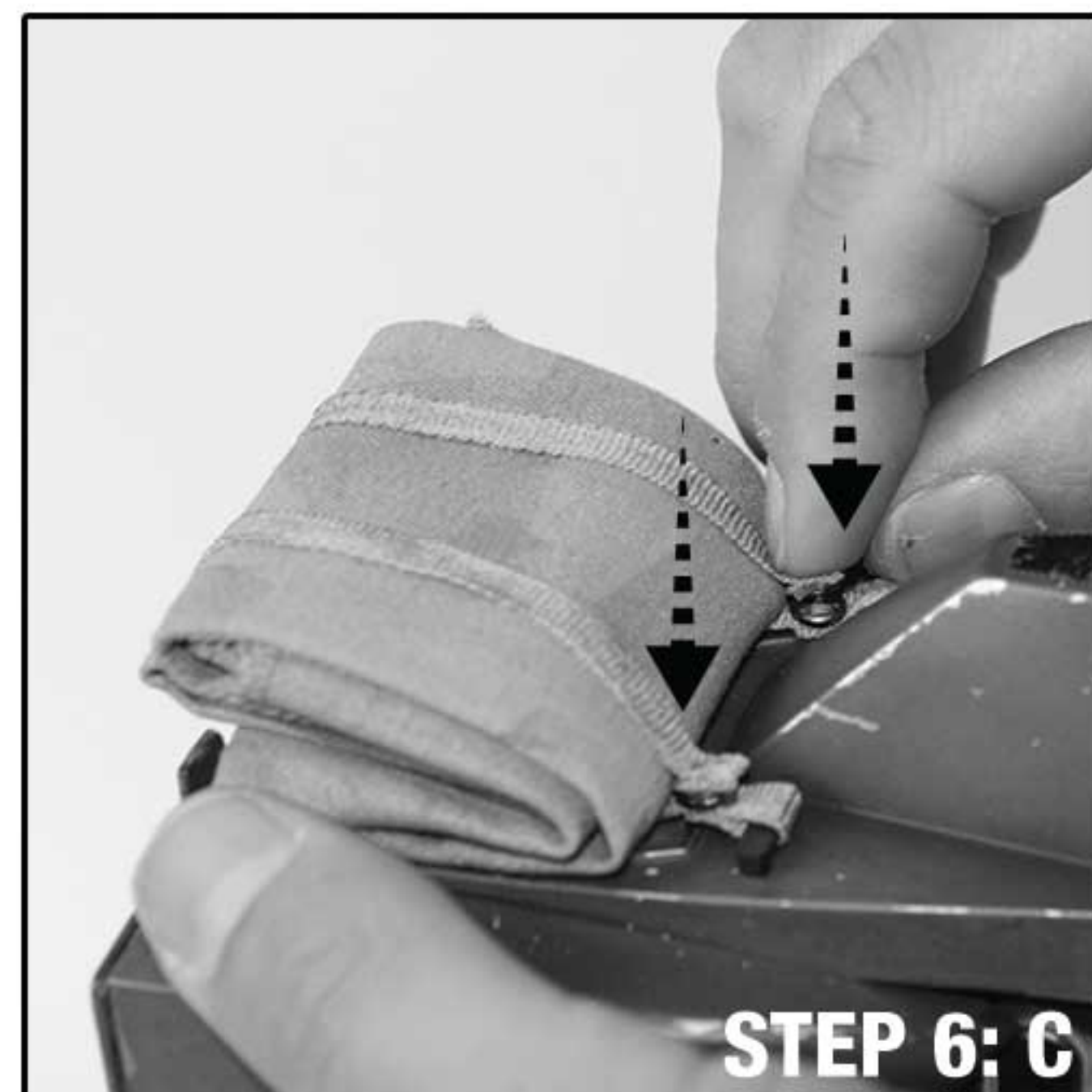
STEP 4: Plug the rectangular cap attached to the power cell recharging lines into the double prong slot located along the inside of the bottom protective armor. Key bottom protective armor into the matching rectangular key plug on the outrigger assembly.



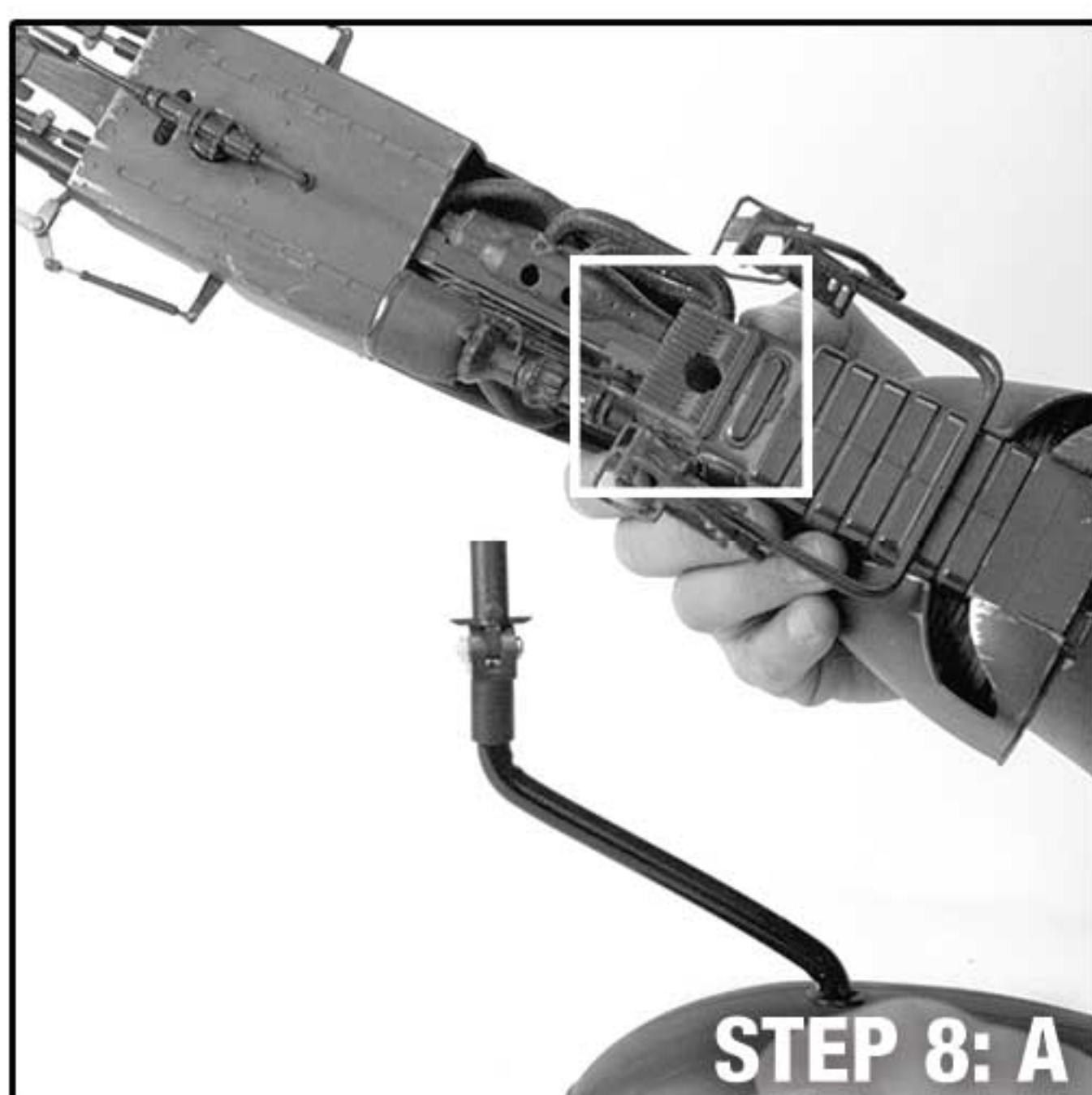
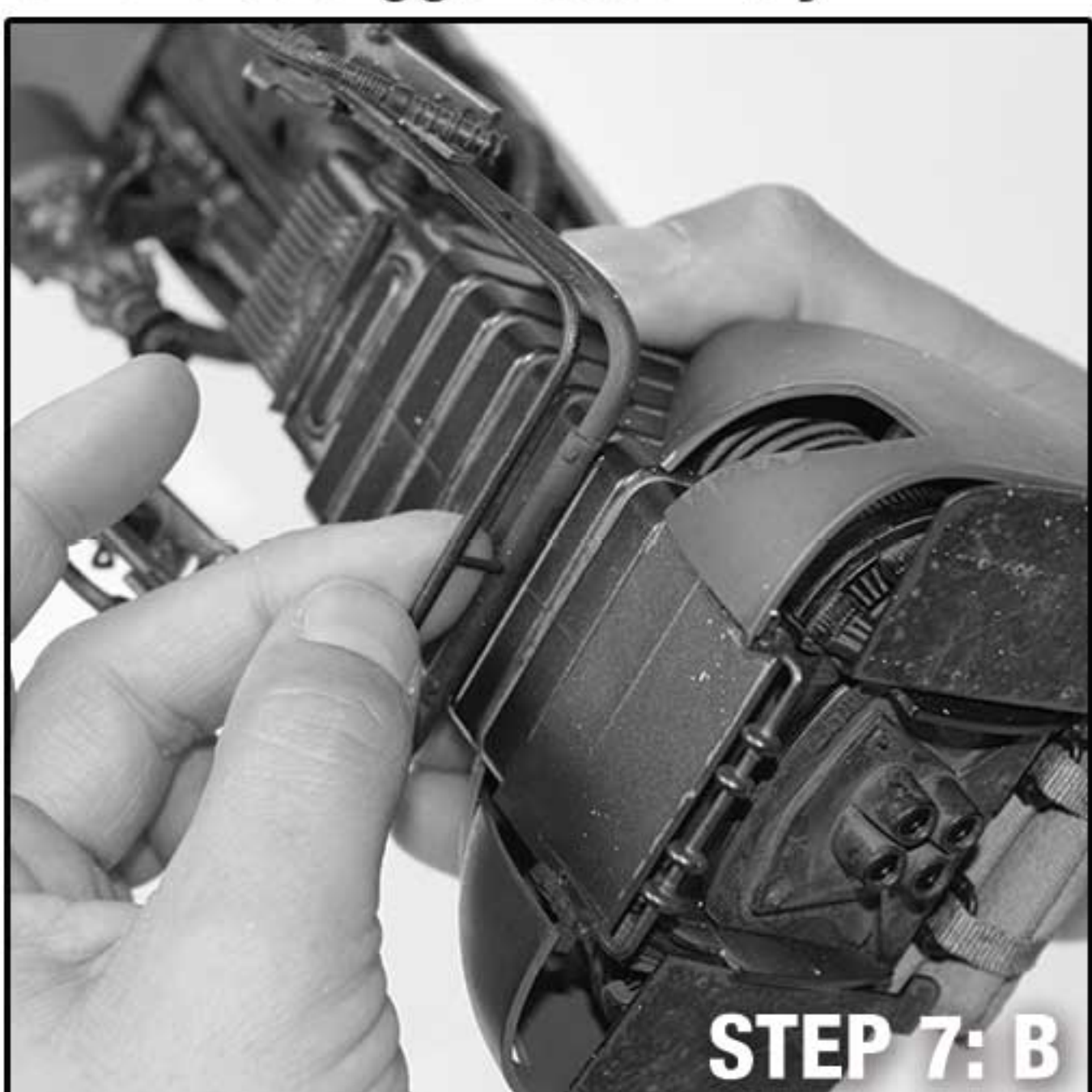
STEP 5: Insert blaster canon and laser canon power coupling into designated round slots to lock bottom protective armor in place.



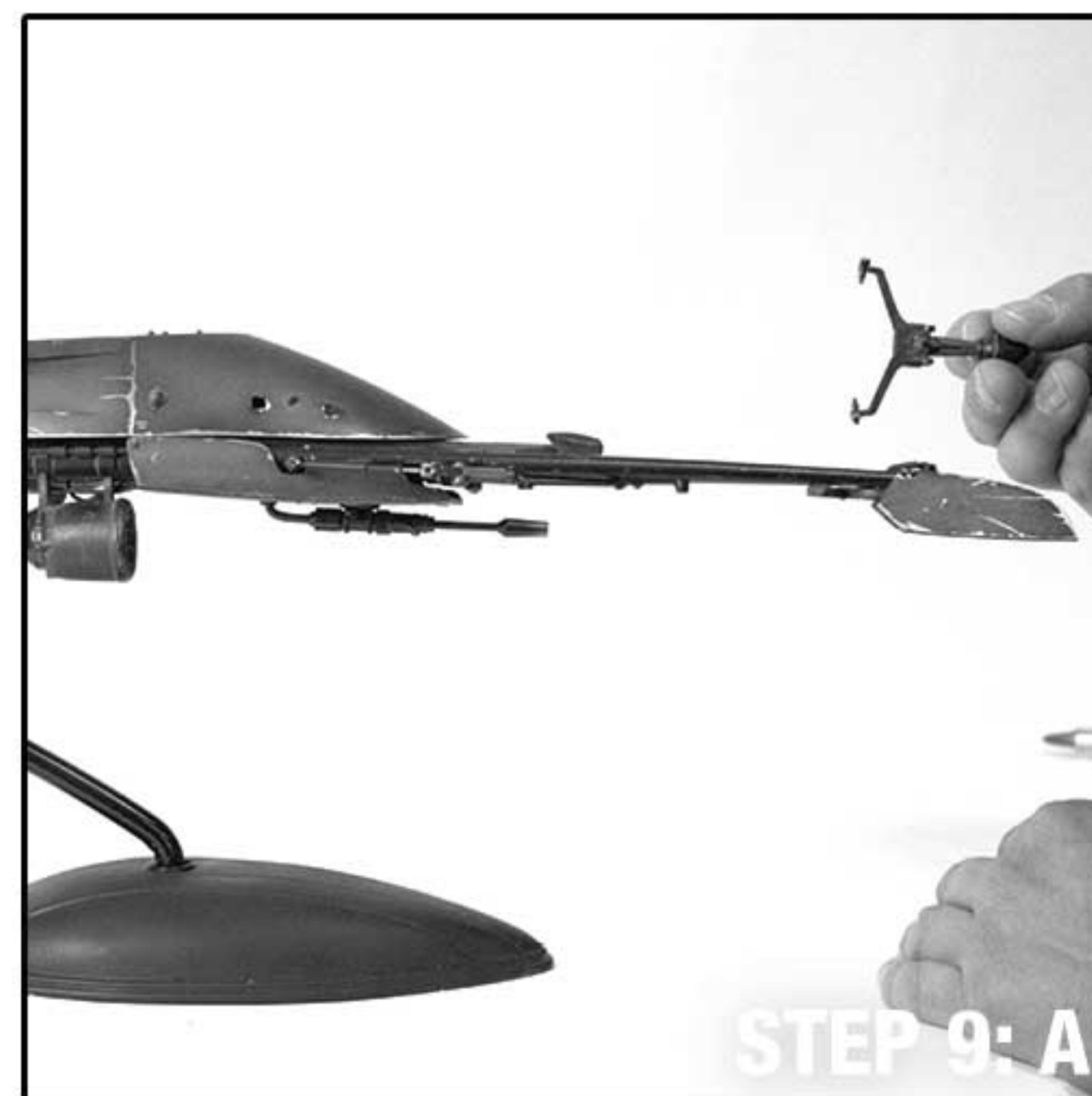
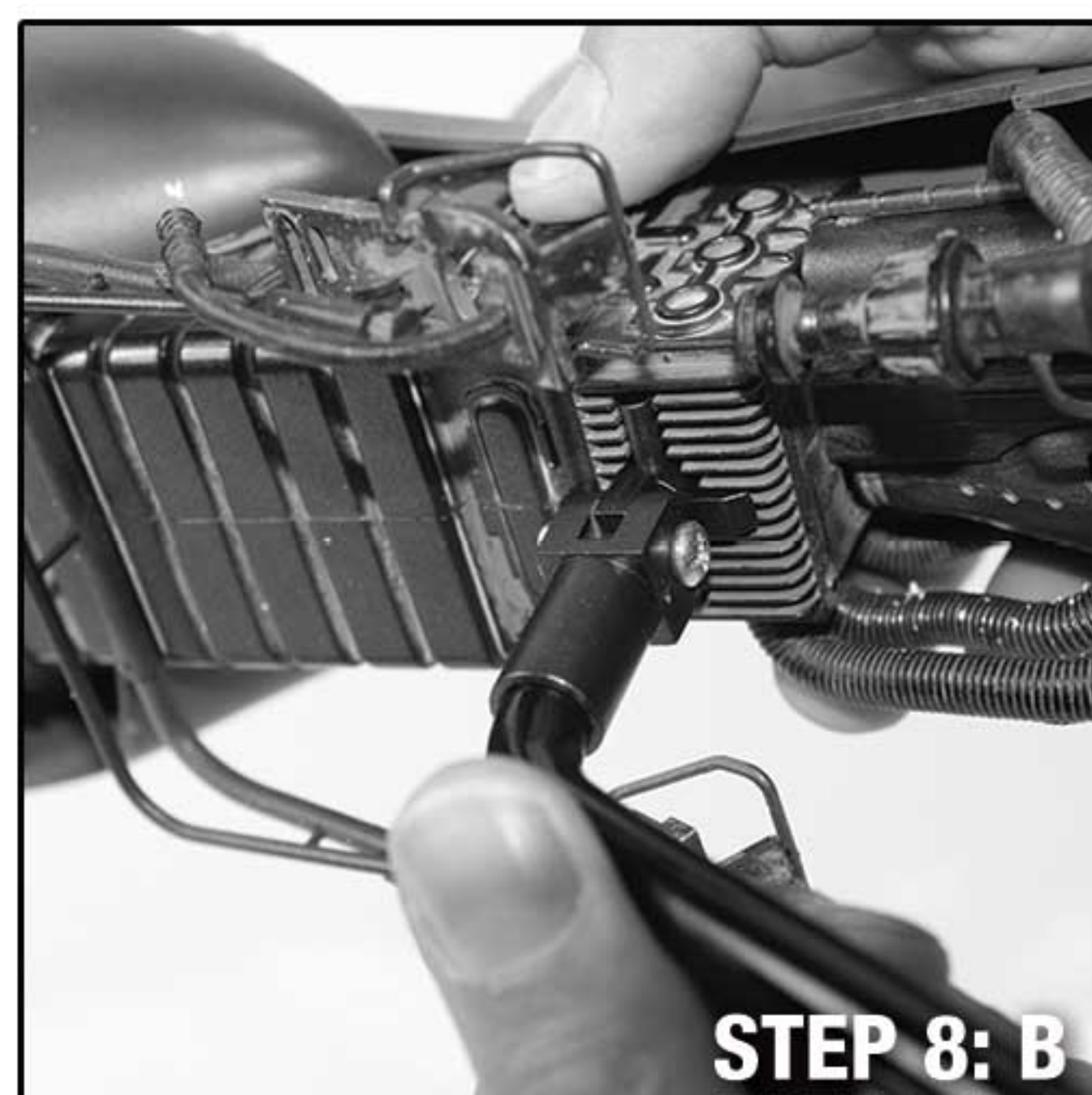
STEP 6: Hold tarp cover in place over open canvas straps. Bring both straps over tarp and snap into place.



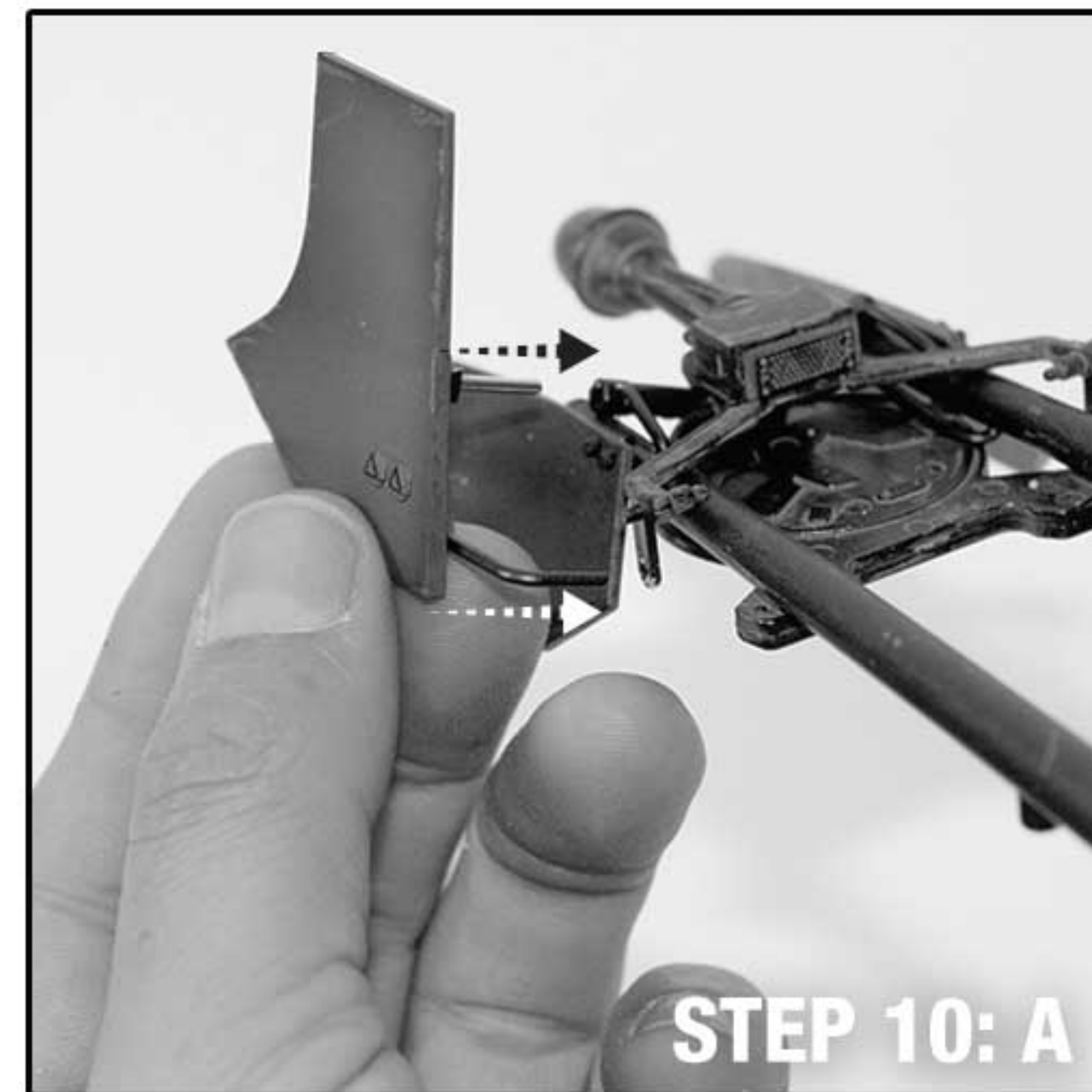
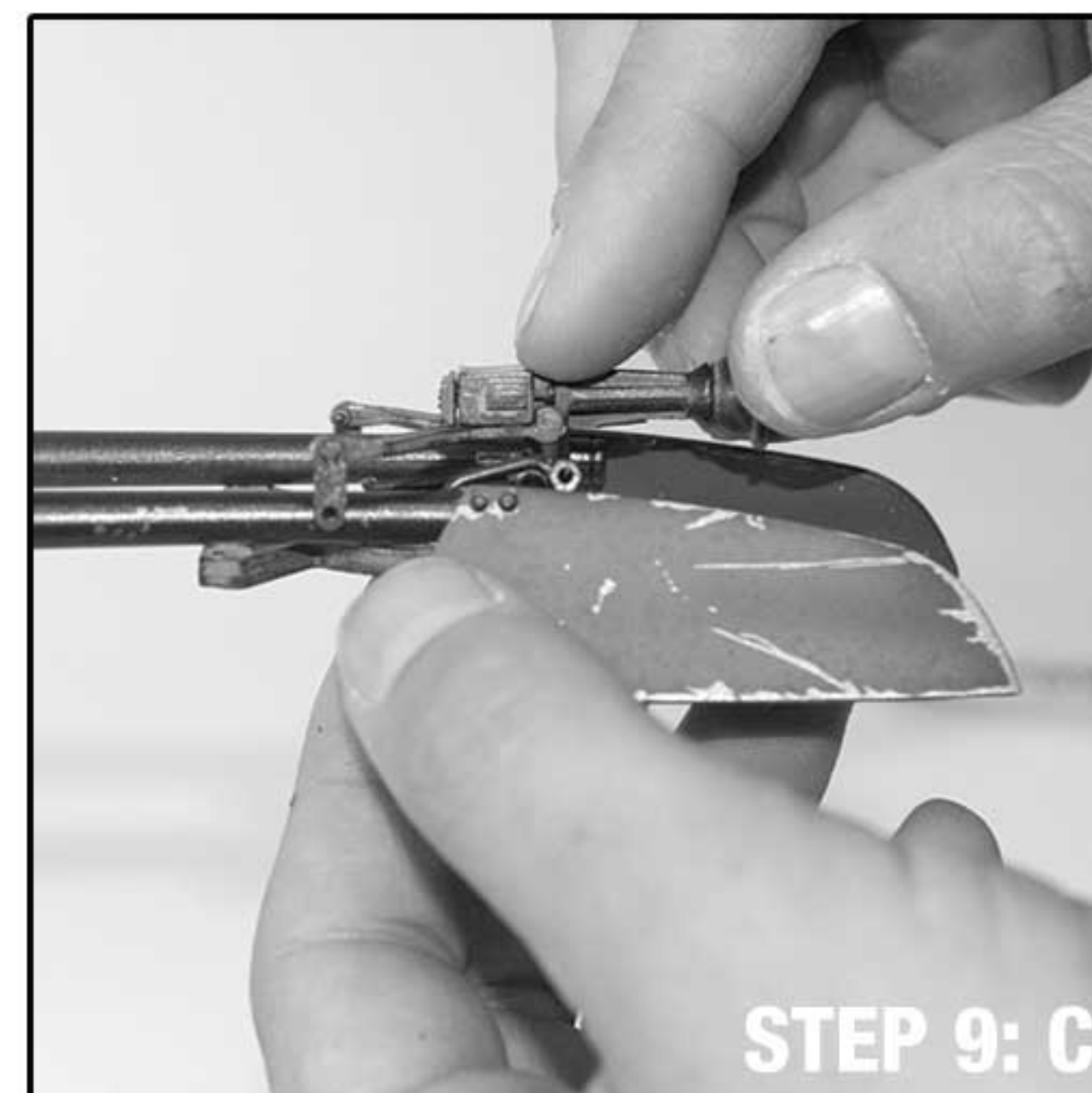
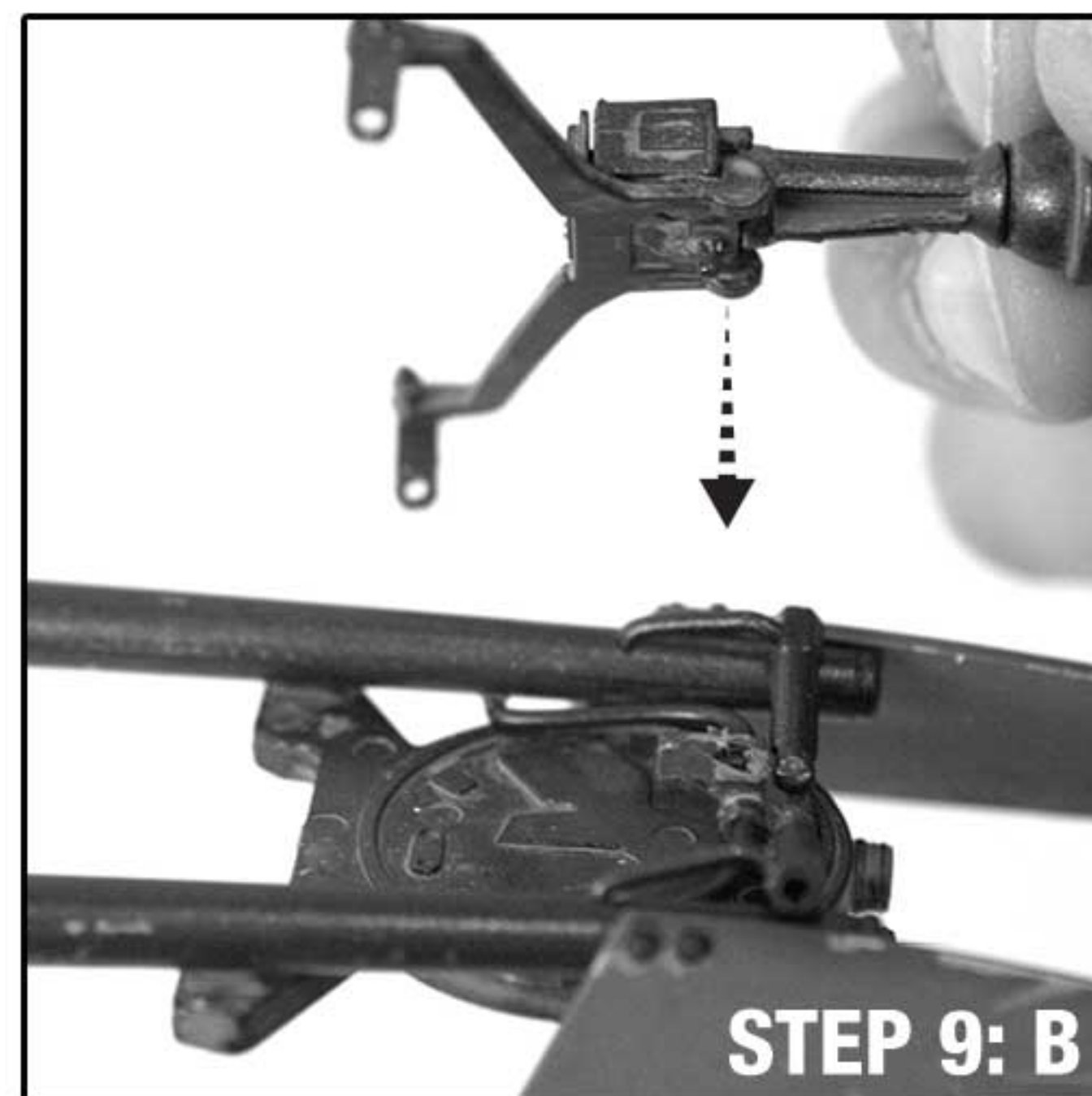
STEP 7: Insert the rectangular plug on the foot pedals into the rectangular slot located along the base of the hull closest to the thrusters.



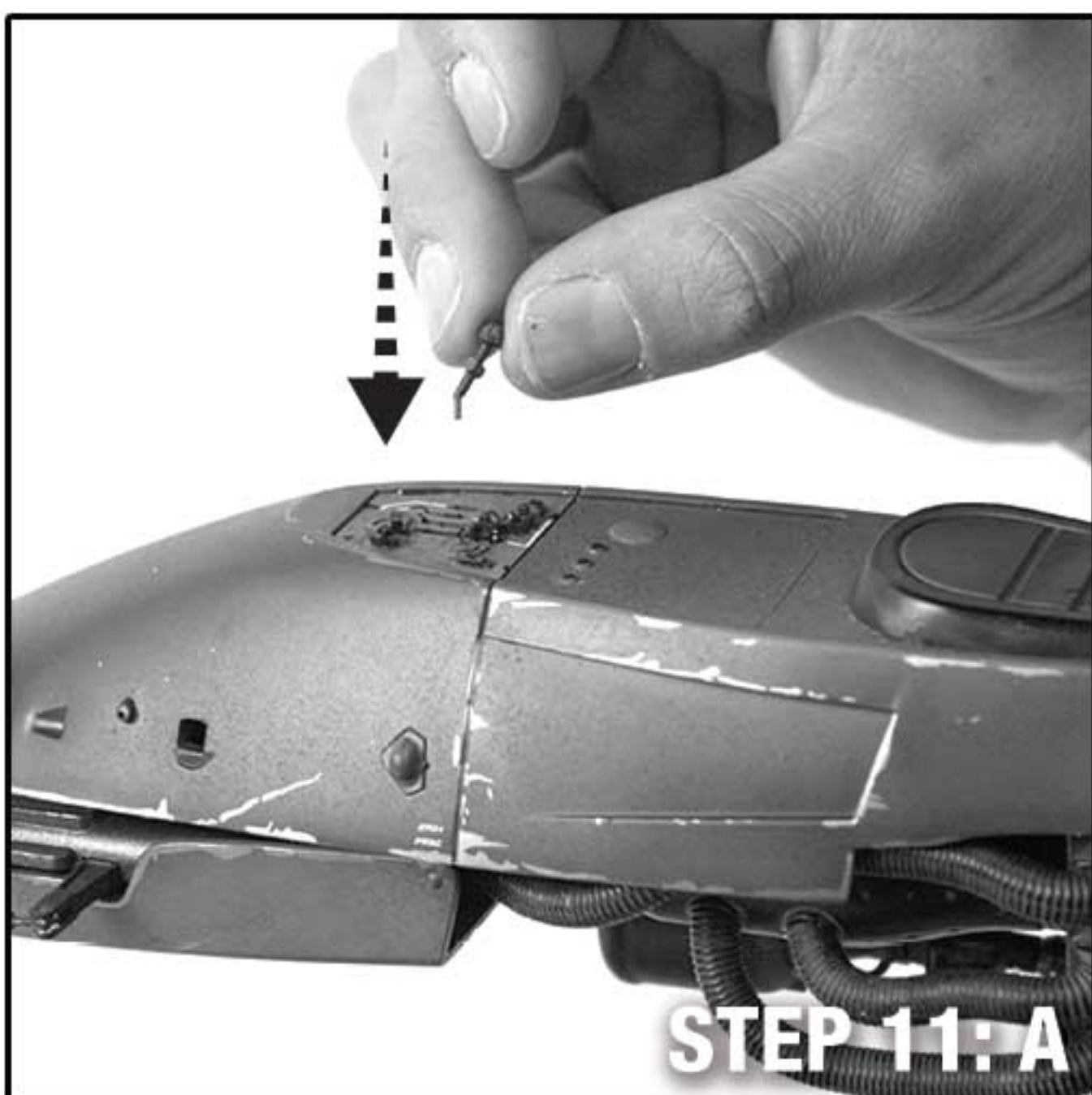
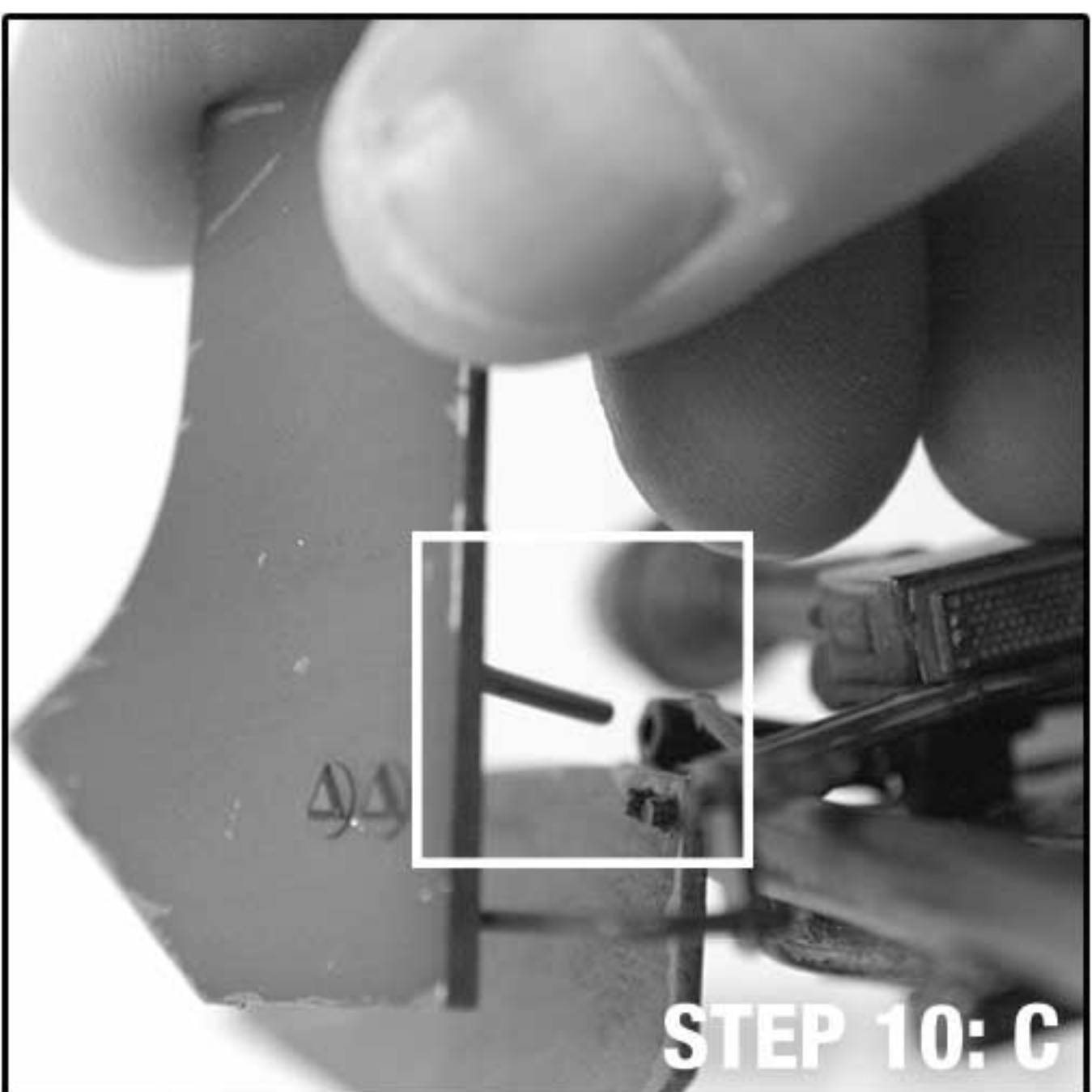
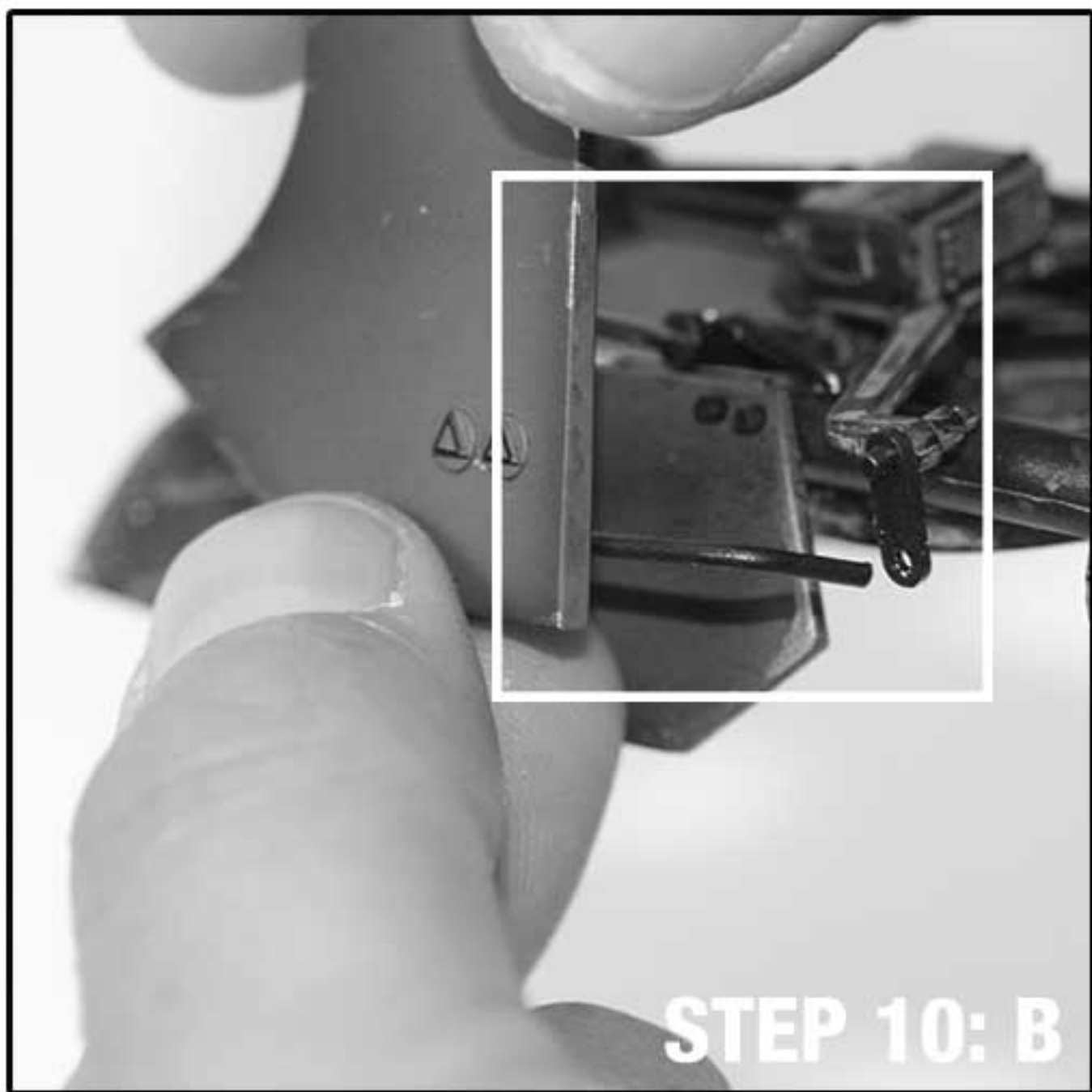
STEP 8: Attach the support base to the Speeder Bike™ hull by aligning the cylinder extensions into the cross shaped key hole to lock into place.



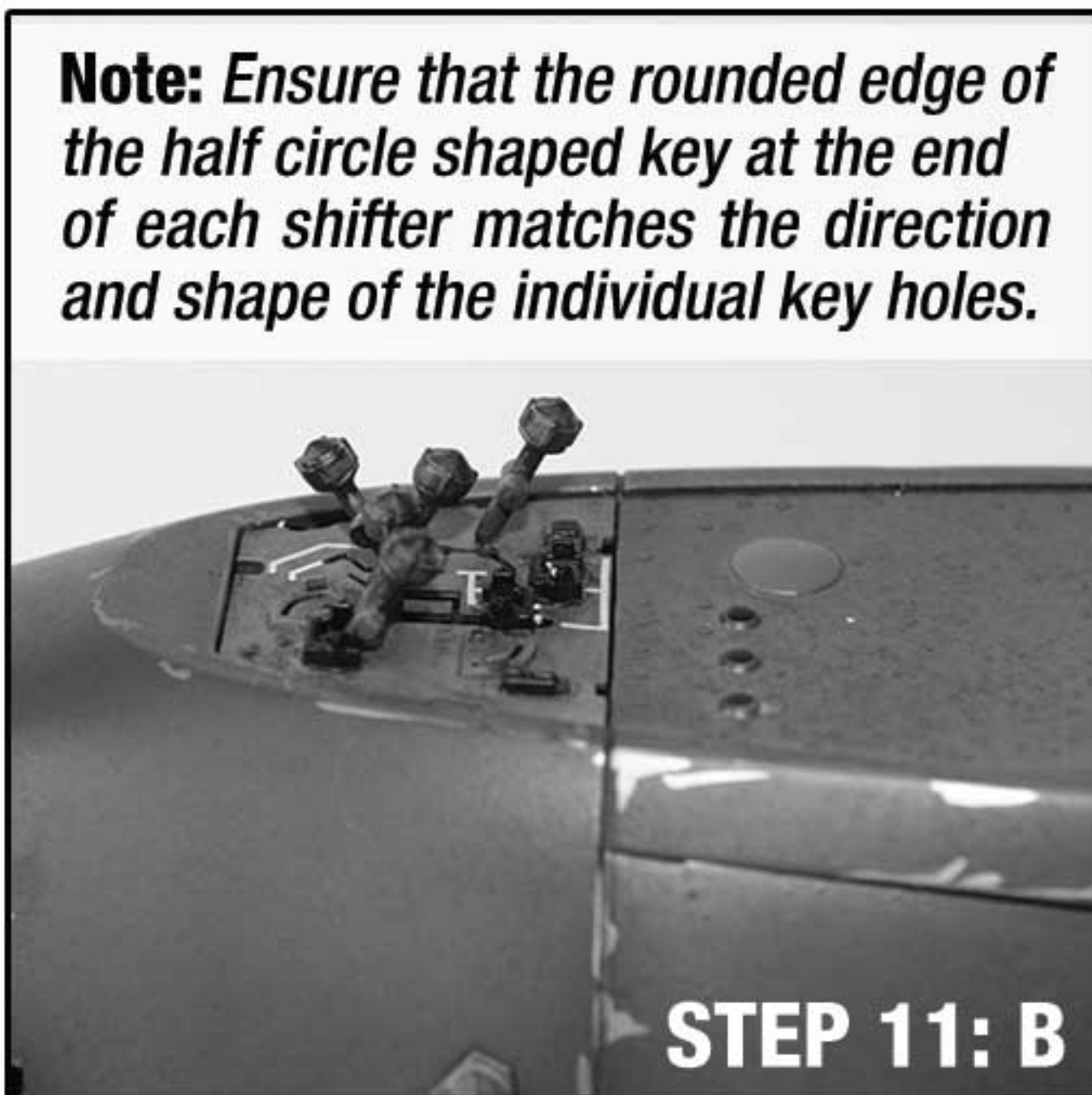
STEP 9: Attach the terrain sensor by snapping the plug located at the center to the nose of the bike between the lower two front steering vanes.



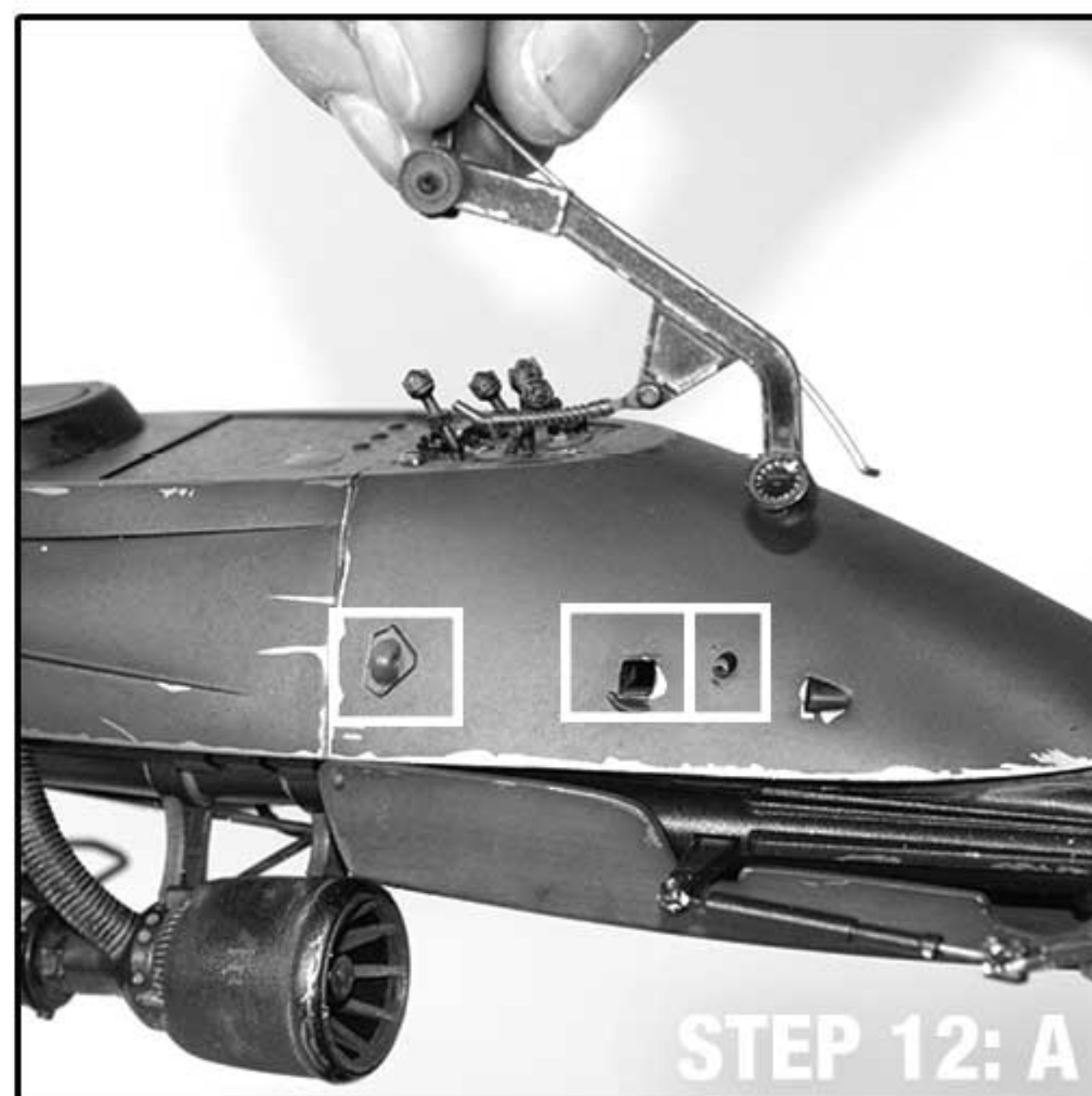
STEP 10: Slide left and right upper steering vanes into designated key holes located at the nose of the bike.



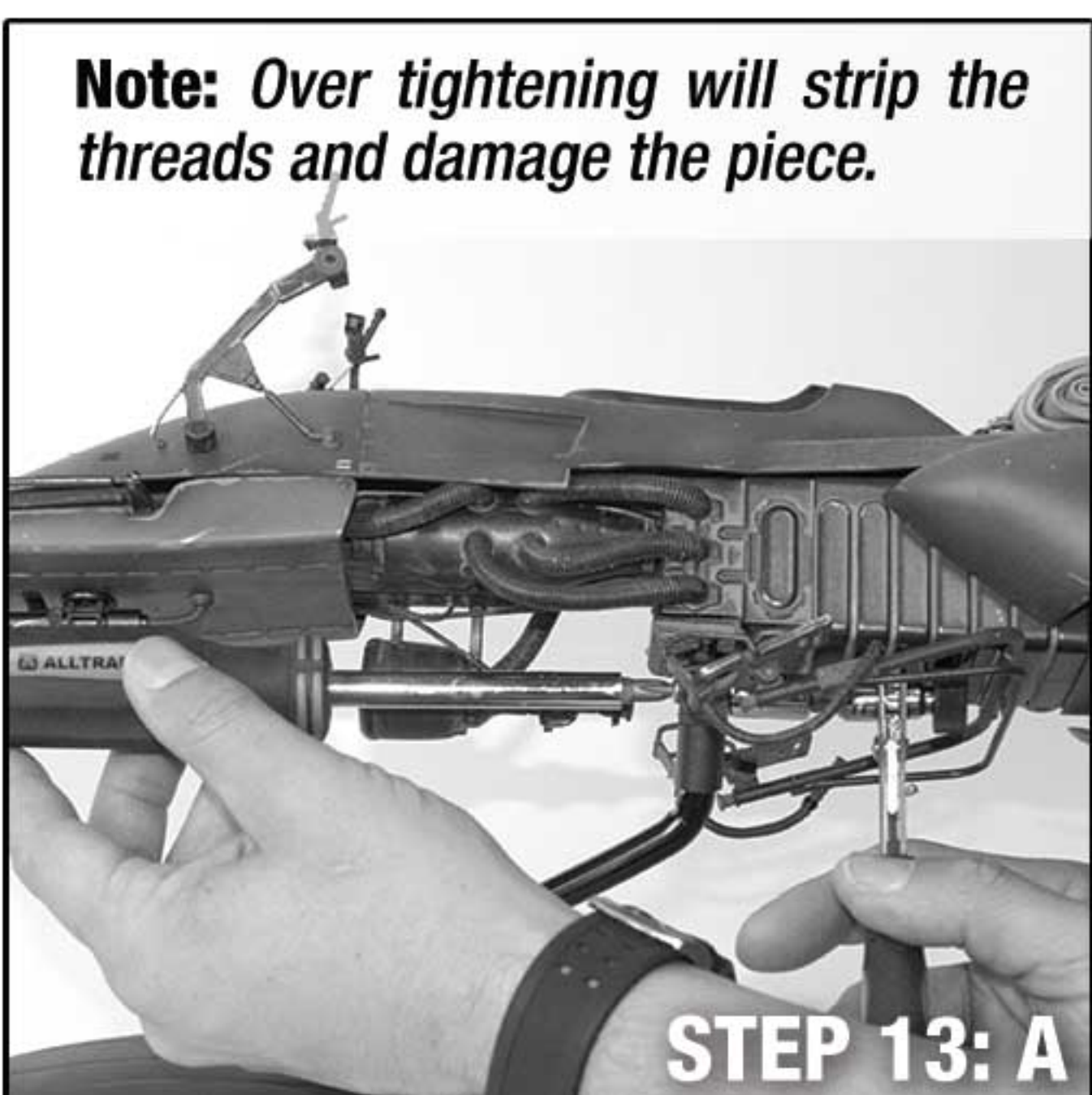
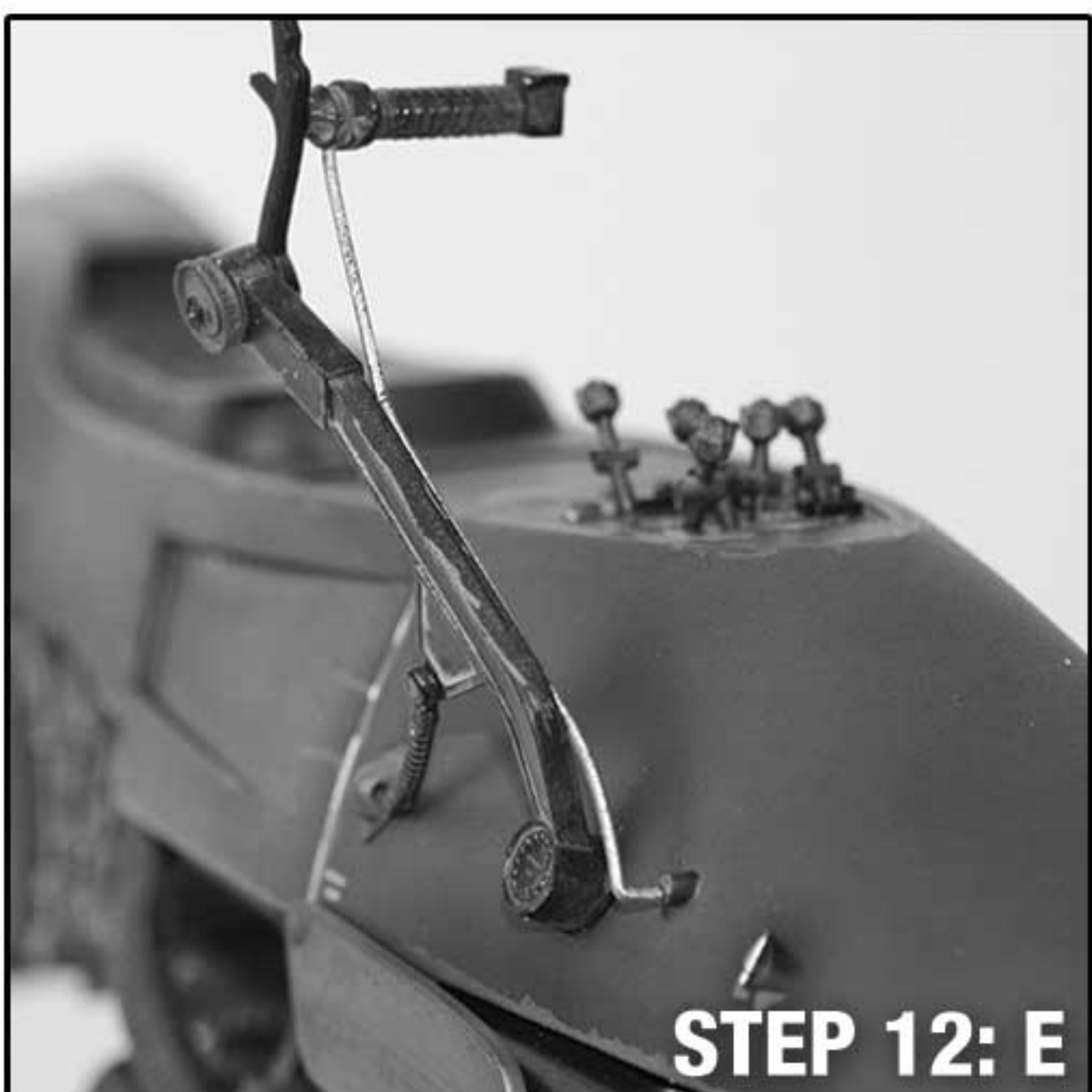
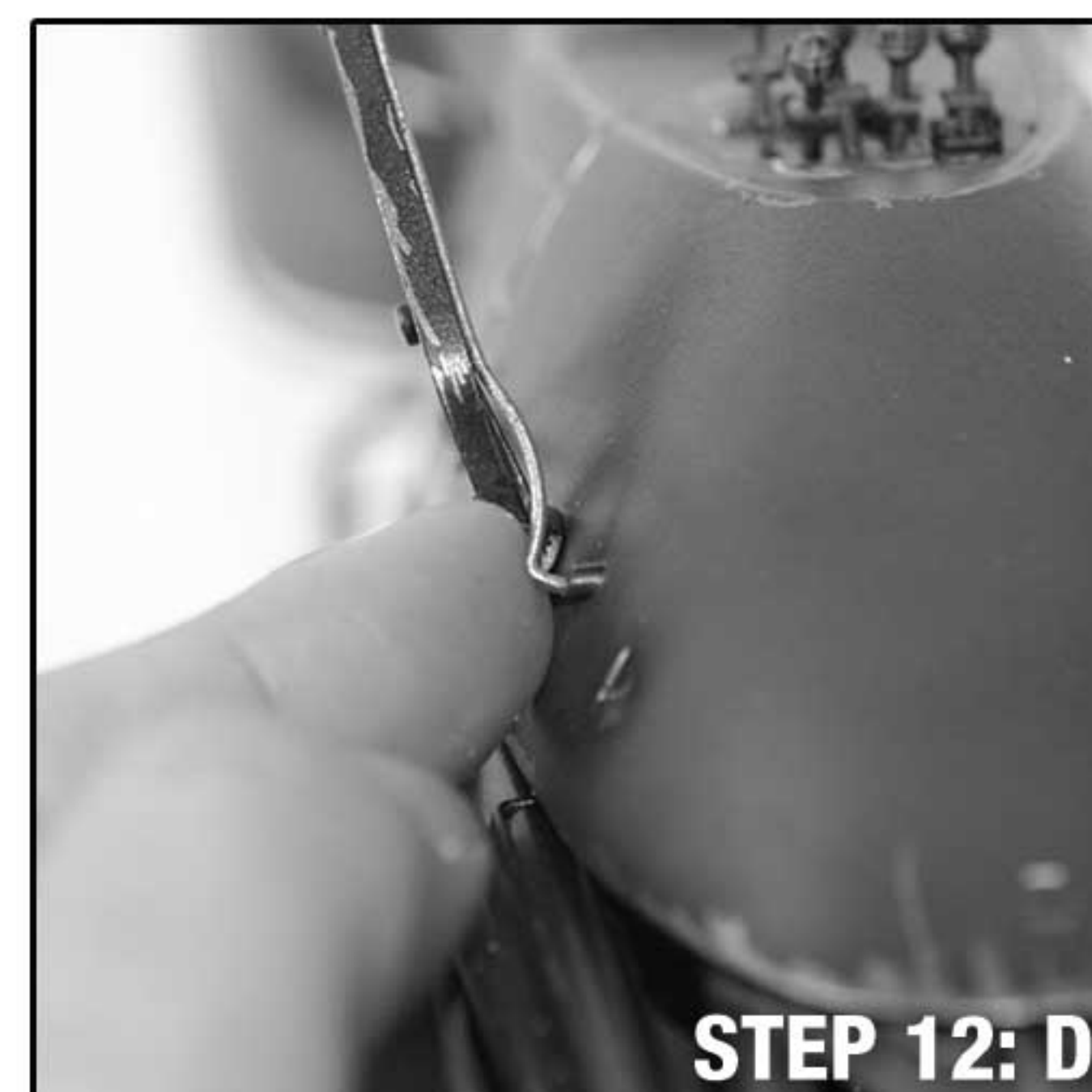
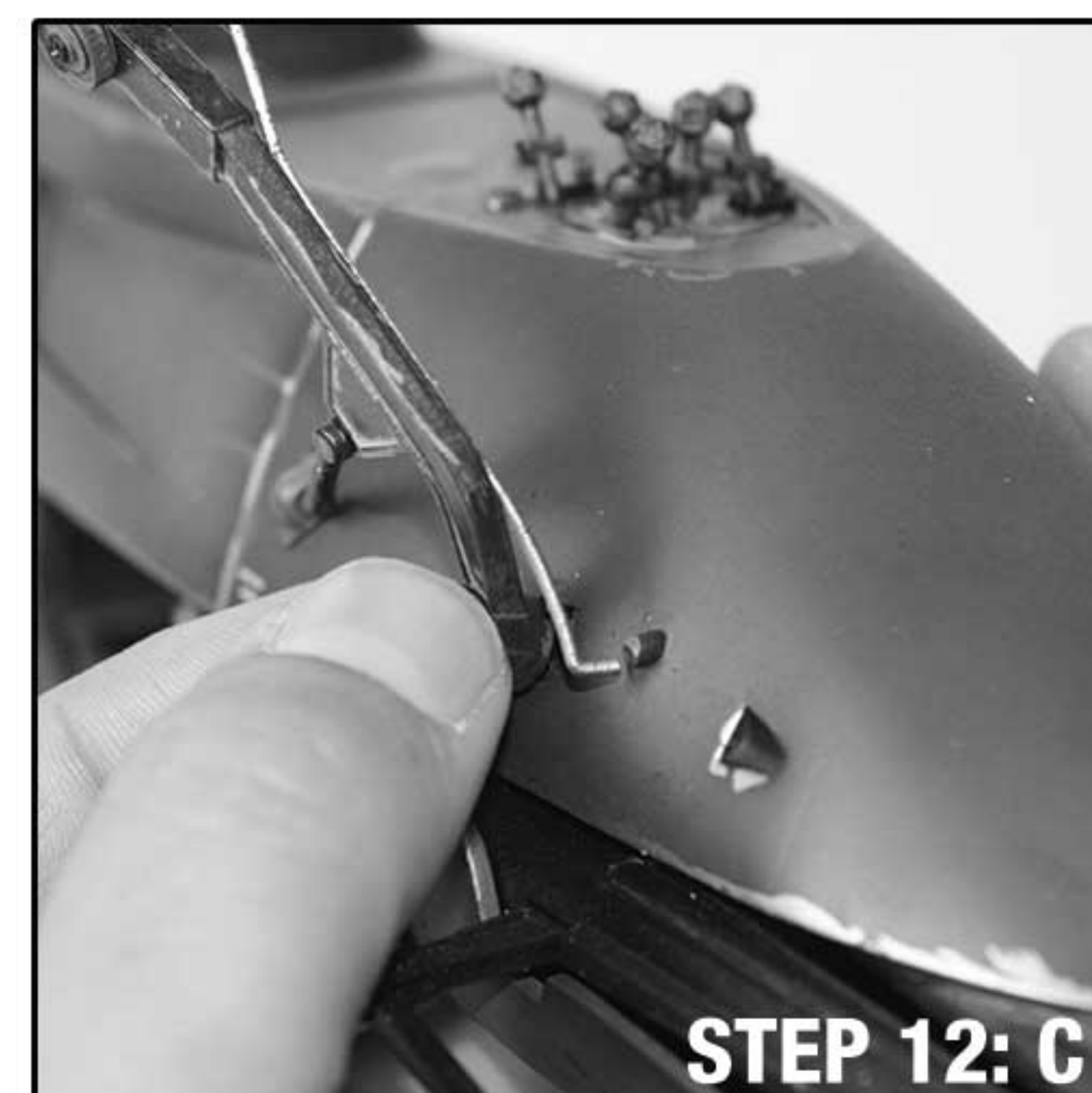
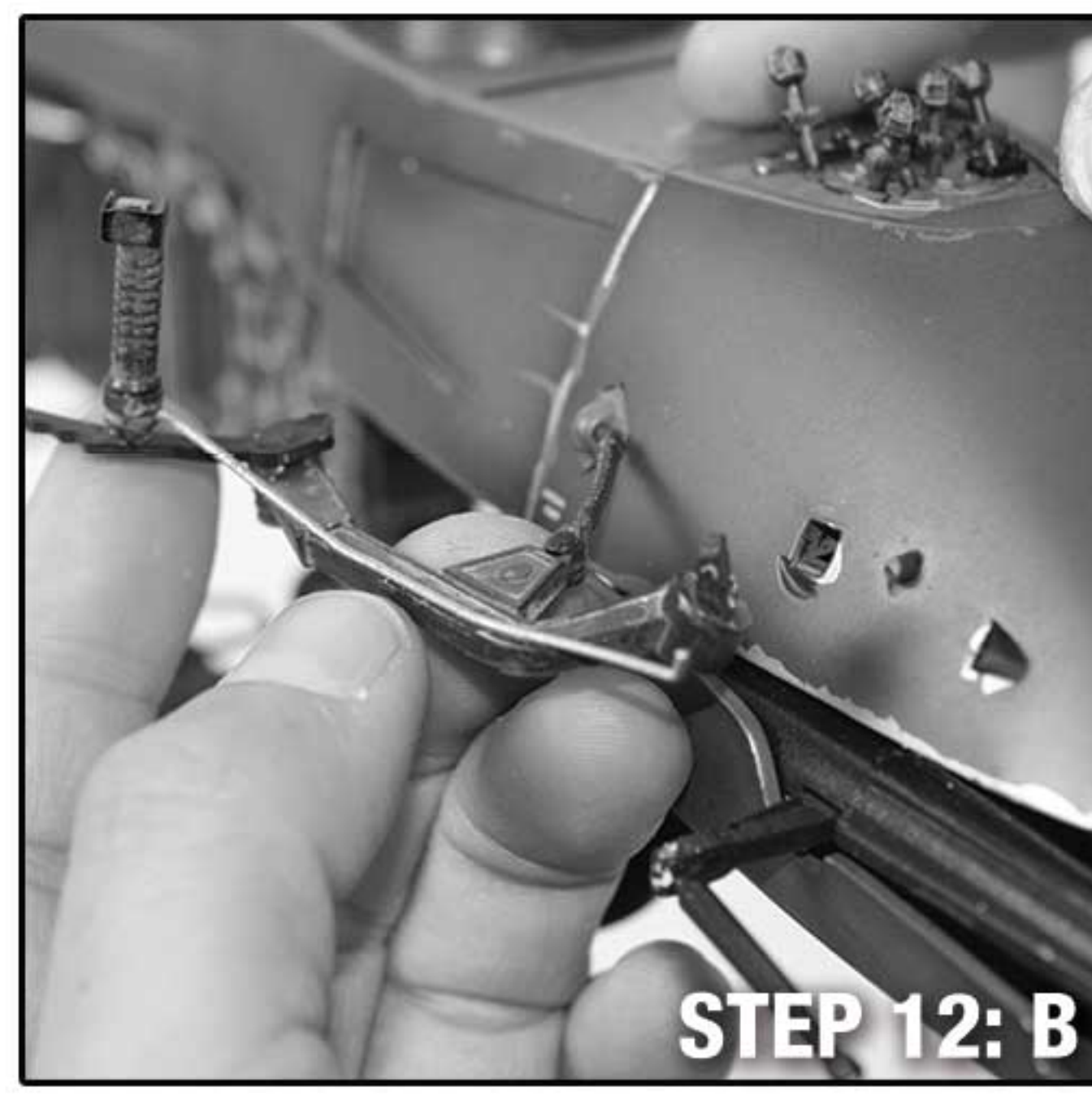
STEP 11: Insert five individual shifters into the power management settings system of the Speeder Bike™.



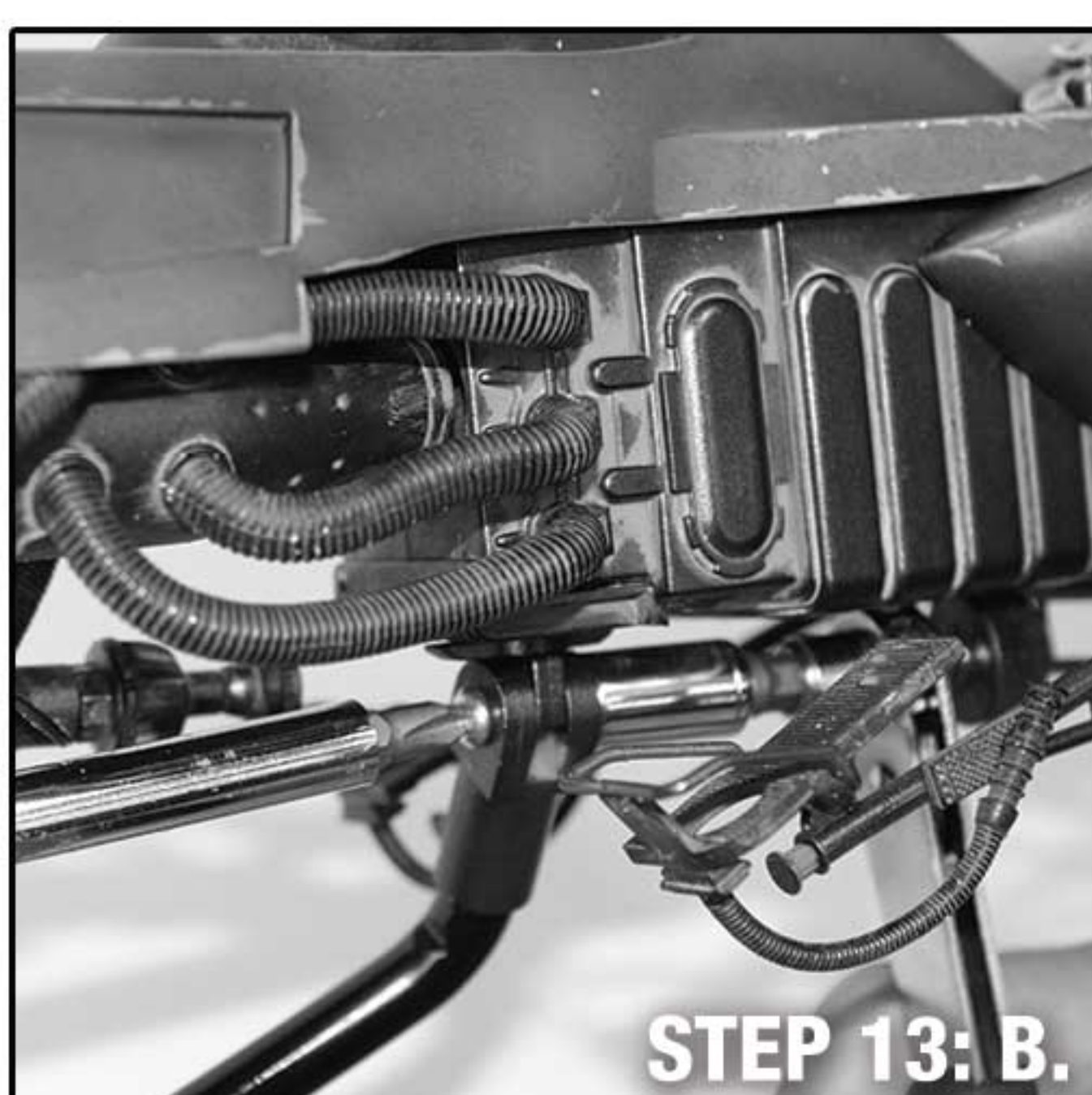
Note: Ensure that the rounded edge of the half circle shaped key at the end of each shifter matches the direction and shape of the individual key holes.



STEP 12: Install both left and right steering levers by plugging in the larger square key first. Due to a friction fit, slightly wiggle the larger square key into place. After the larger square key has been securely placed, slide the two softer cables into their designated slots. The softer cables are not a friction fit and will be loose fitting.



STEP 13: To adjust the banking of the Speeder Bike™ use both a Phillips screw driver and a socket wrench to make banking adjustments. Use great care when making these adjustments. Tighten slightly and gradually.



Note: Over tightening will strip the threads and damage the piece.



SIDESHOW

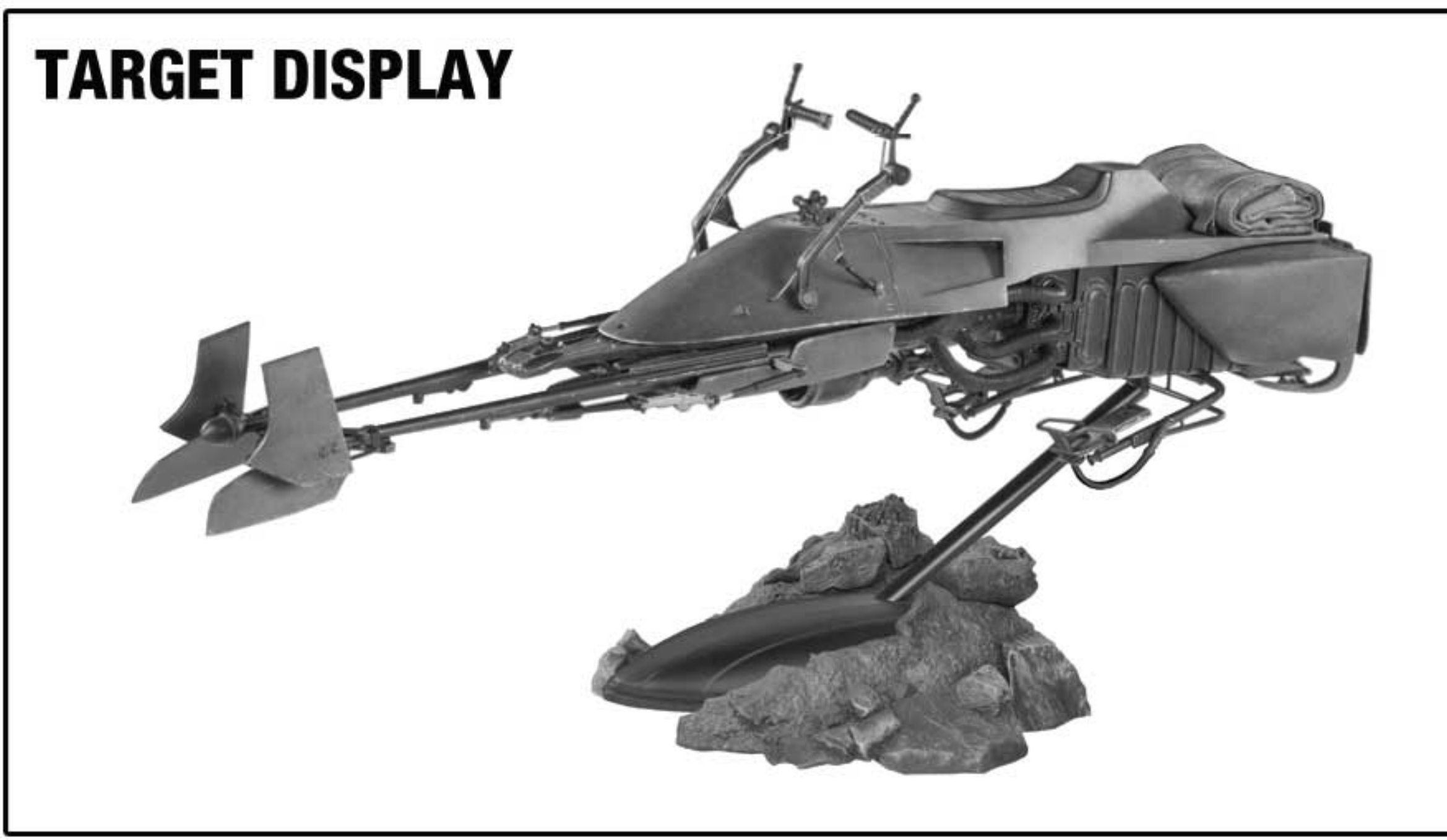
For more information visit: SIDESHOW.COM/Instructions

ASSEMBLY INSTRUCTIONS

SPEEDER BIKE™ - SIXTH SCALE FIGURE

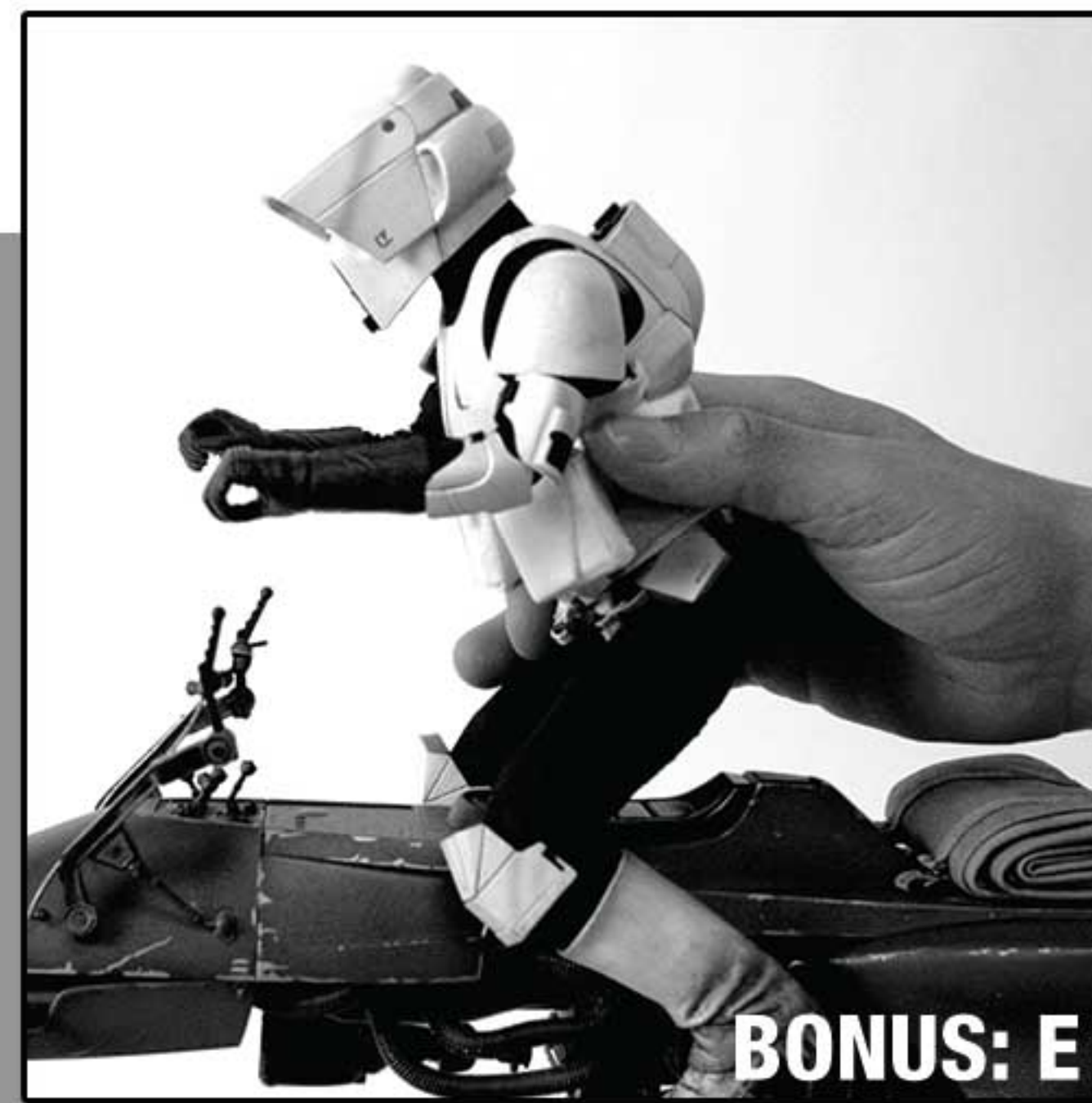
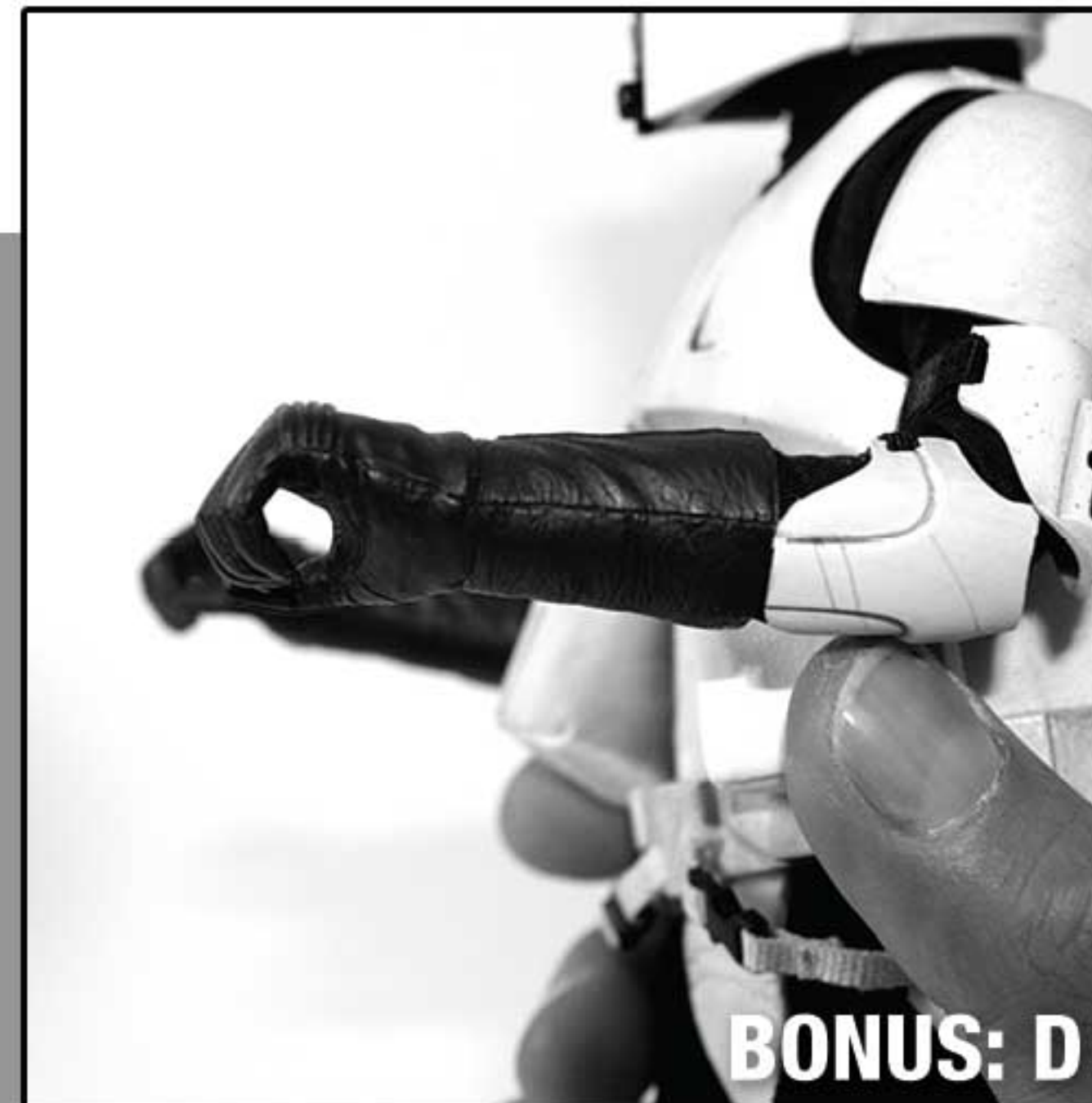
ATTENTION: PLEASE USE CAUTION DURING ASSEMBLY

FOR FURTHER ASSISTANCE: CALL US (WITHIN U.S.): 1-855-SIDESHOW CALL US (OUTSIDE U.S.): 1-805-214-2157



STEP 14: If desired, slide the scene stealer base accessory over the support stand base. Follow steps B - G above for placing individual pieces (4 smaller loose pieces total).

STEP 15: Enjoy your fully assembled Speeder Bike™ !



BONUS FEATURE: With the separate purchase of the Scout Trooper™ sixth scale figure, use curved boot shown in steps A - C for Speeder Bike™ placement as well as “C”- grip” hands shown in steps D - G. Foot pedals are hinged for minor adjustments when fitting figures feet. Gently open hands when placing onto steering lever grips. Grips will rotate forward slightly for optimal fitting of figure once placed on the Speeder Bike™. Take caution not to over extend the handle grips forward, the silver brace cable will detach and cause damage to the piece. <http://www.sideshowtoy.com/collectibles/star-wars-scout-trooper-sideshow-collectibles-100103/>



ATTENTION: PLEASE USE CAUTION DURING ASSEMBLY

FOR FURTHER ASSISTANCE: CALL US (WITHIN U.S.): 1-855-SIDESHOW CALL US (OUTSIDE U.S.): 1-805-214-2157



SIDESHOW

For more information visit: SIDESHOW.COM/Instructions