

# ASSEMBLY INSTRUCTIONS

## DIABLO III STATUE

**ATTENTION:** PLEASE USE CAUTION DURING ASSEMBLY

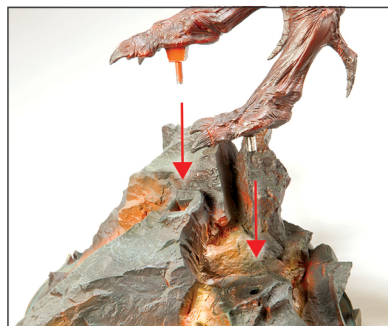
**FOR FURTHER ASSISTANCE:**

CALL US (WITHIN U.S.): 1-855-SIDESHOW

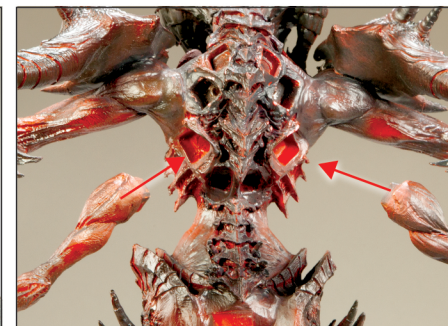
CALL US (OUTSIDE U.S.): 1-805-214-2157



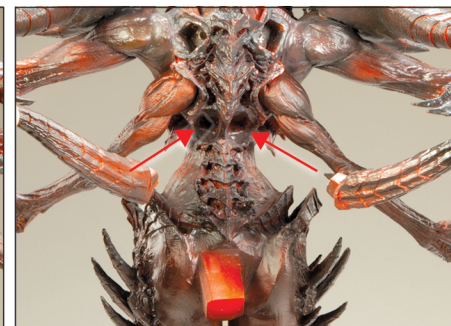
Remove all parts from package.



Place figure on to base.



Attach left and right secondary arms to back.



Attach lower horns below secondary arms on back.



Attach large sythe-like horns to back.



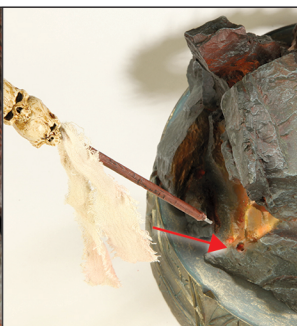
Attach uppermost horns to back.



Attach tail.



Insert skull-laden staffs into holes on base.



Push button underneath tail to activate light-up feature.



SIDESHOWCOLLECTIBLES.COM



© 2013 Blizzard Entertainment, Inc. All rights reserved. Diablo and Blizzard Entertainment are trademarks or registered trademarks of Blizzard Entertainment, Inc., in the U.S. and or other countries. Sideshow Collectibles is the registered trademark of Sideshow Inc.