

# ASSEMBLY INSTRUCTIONS

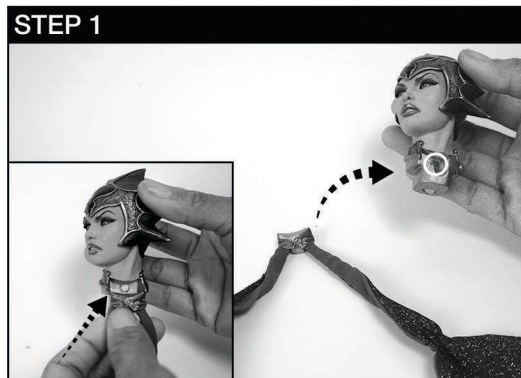
EVIL-LYN - STATUE

**ATTENTION:** PLEASE USE CAUTION DURING ASSEMBLY

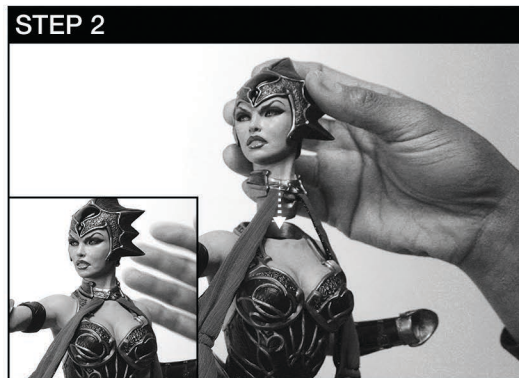
FOR FURTHER ASSISTANCE:

CALL US (WITHIN U.S.): 1-855-SIDESHOW

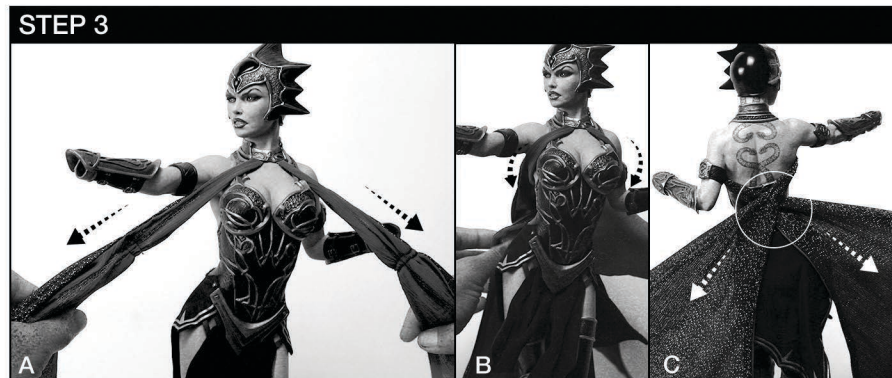
CALL US (OUTSIDE U.S.): 1-805-214-2157



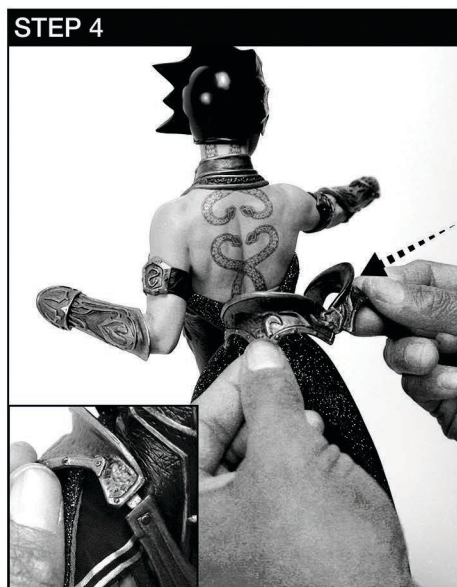
**STEP 1:** Attach the magnetic choker piece to the key hole located at the base of the neck.



**STEP 2:** Magnetically attach the head to the body by placing the key at the base of the neck into the key hole at the top of the body.



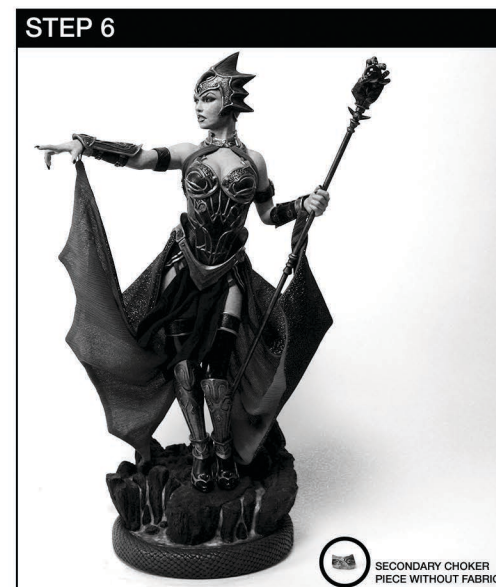
**STEP 3:** (A) Gently pull each fabric panel to opposite ends. (B) Cross each fabric panel behind the figure's back, crossing the left panel over the right. (C) Keep fabric crossed behind the figure while proceeding to step 4.



**STEP 4:** Friction fit back belt piece into the fixed front belt key holes. Ensure belt is placed over the crossed fabric panels.



**STEP 5:** Wrap each loop located at the end of both fabric panels, around the cylindrical grooves made on both wrists of the left and right hand. Once each loop is securely placed on either wrist, insert each hand into the appropriate arm of the figure.



**Step 6:** Your figure is complete, ENJOY!  
**NOTE:** A secondary choker piece has been provided without fabric. (Follow Steps 1 & 2)



**SIDESHOW**

For more information visit: [SIDESHOW.COM/Instructions](http://SIDESHOW.COM/Instructions)

