

ASSEMBLY INSTRUCTIONS

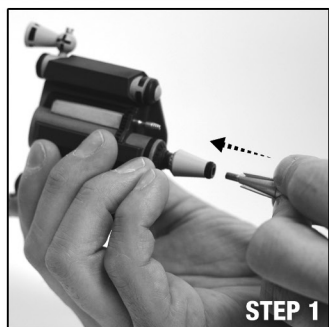
JANGO FETT - SIXTH SCALE FIGURE

ATTENTION: PLEASE USE CAUTION DURING ASSEMBLY

FOR FURTHER ASSISTANCE:

CALL US (WITHIN U.S.): 1-855-SIDESHOW

CALL US (OUTSIDE U.S.): 1-805-214-2157



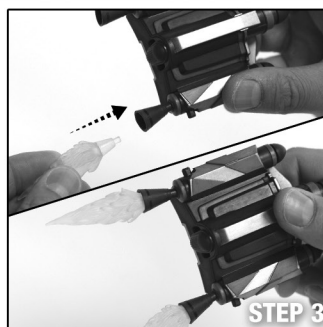
STEP 1

STEP 1: Missile friction fits into the top of the Z-6 jetpack.



STEP 2

STEP 2: Jetpack hooks onto the tabs on the back armor plate.

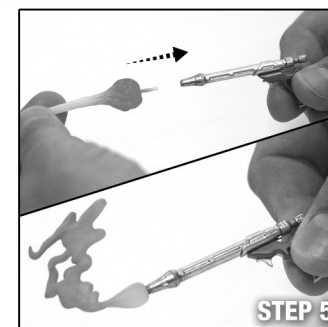


STEP 3

STEP 3: Flame attachments have different shaped tips that fit into the corresponding holes within jetpack nozzles. **STEP 4:** Kamino saber dart on right arm gauntlet is removable.

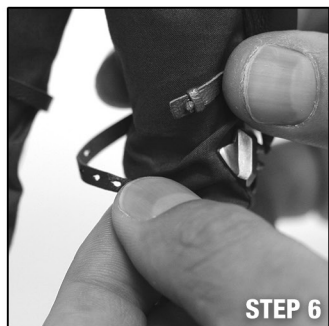


STEP 4



STEP 5

STEP 5: Blast flare and smoke attachments friction fit into blaster pistols.



STEP 6

STEP 6: Adjust holster straps around the legs to your liking.



STEP 7: A

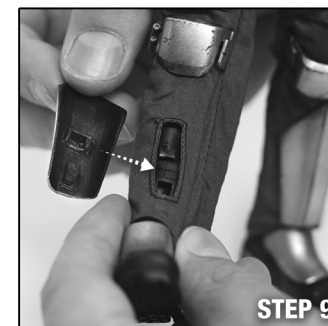
STEP 7: Adjust belt around figure's waist to your liking. Slide belt back into place under back strap.



STEP 7: B



STEP 8



STEP 9

STEP 8 & 9: Snap knee and shin armor keys into designated holes. **Note:** be very gentle while holding the knee cap armor as the sides are very fragile.



STEP 10: A

STEP 10: Gently grasp the figure and pull up on helmet to remove it.



STEP 10: B

Undo the snap on the poncho.



STEP 10: C

Place poncho on figure with pleating towards the back.



STEP 10: D

Feed left arm through arm hole and close snap.



STEP 10: E

Place helmet back on figure.



SIDESHOW

© & ™ Lucasfilm Ltd. © 2015 Sideshow Inc. Product specifications subject to change.

SIDESHOW.COM/Instructions

ASSEMBLY INSTRUCTIONS

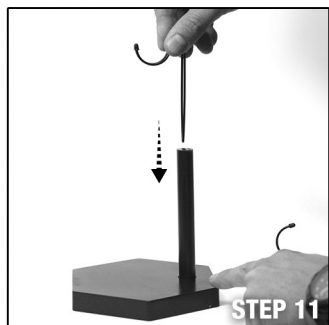
JANGO FETT - SIXTH SCALE FIGURE

ATTENTION: PLEASE USE CAUTION DURING ASSEMBLY

FOR FURTHER ASSISTANCE:

CALL US (WITHIN U.S.): 1-855-SIDESHOW

CALL US (OUTSIDE U.S.): 1-805-214-2157



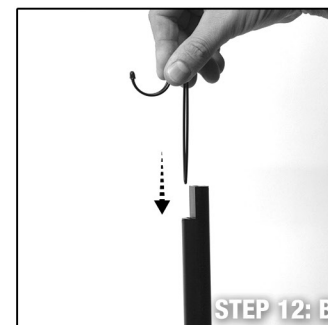
STEP 11



STEP 11: For standing base option, place support stand into base. The holes on top of the tubing should be facing towards the back of the base. Place wire support into the tubing slot, and place figure on base.



STEP 12: A

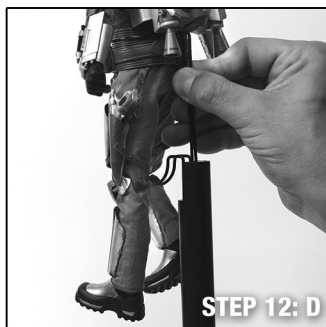


STEP 12: B

STEP 12: For flight attachment option, place taller tubing over small tubing with holes facing the same direction. Next place wire support into the front slot of the tubing.



STEP 12: C

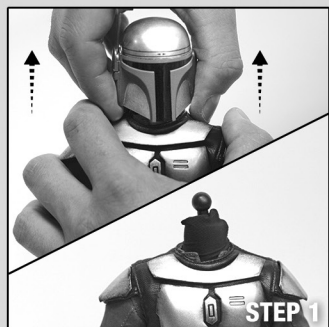


STEP 12: D



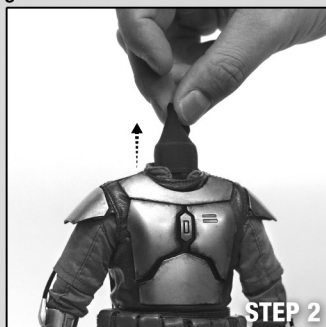
Place wire support around figures waist and place into the far back slot in the tubing.

EXCLUSIVE EDITION: Portrait with pilot headgear instructions *Please be careful and patient*



STEP 1

STEP 1: Gently grasp the figure and pull up on helmet to remove it.

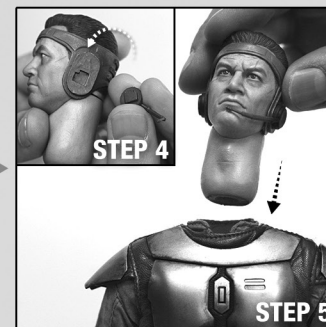


STEP 2

STEP 2: Remove the neck sleeve. Be very careful while handling the figure not to damage the armor. **STEP 3:** While gently grasping figure, being careful of the armor plates, pull the neck upward at slight angle to release neck from balljoint.



STEP 3



STEP 4

STEP 4: Mouthpiece keys into pilot headgear. **STEP 5:** Place exclusive potrait and neck onto figure.

STEP 5



SIDESHOW

© & ™ Lucasfilm Ltd. © 2015 Sideshow Inc. Product specifications subject to change.

SIDESHOW.COM/Instructions