

ASSEMBLY INSTRUCTIONS

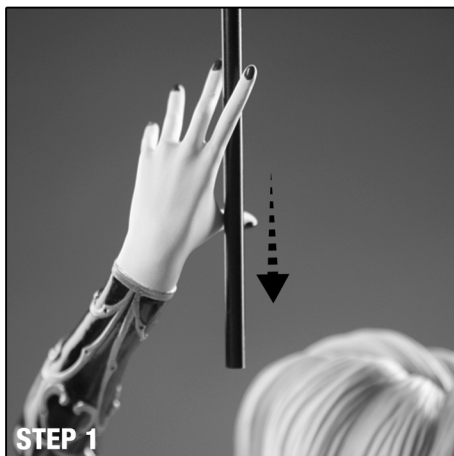
THE TEMPTATION OF LADY DEATH - PREMIUM FORMAT™ FIGURE

ATTENTION: PLEASE USE CAUTION DURING ASSEMBLY

FOR FURTHER ASSISTANCE:

CALL US (WITHIN U.S.): 1-855-SIDESHOW

CALL US (OUTSIDE U.S.): 1-805-214-2157



STEP 1

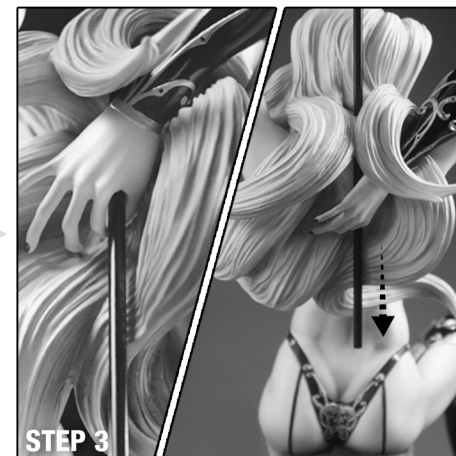
STEP 1: Gently guide the scythe through the figures fingers as shown above.

NOTE: Be careful as fingers are fragile.



STEP 2

STEP 2: Continue to guide the scythe through the opening in the figures hair.



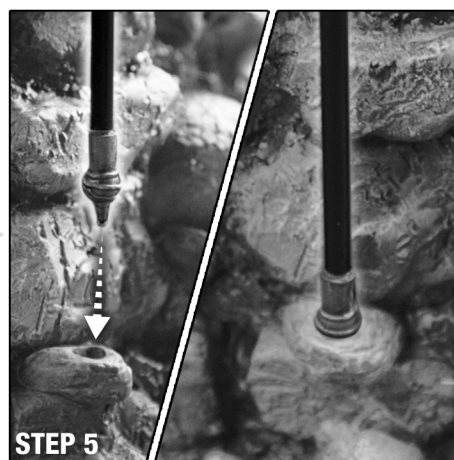
STEP 3

STEP 3: Continue to guide the scythe through the figures other hand.



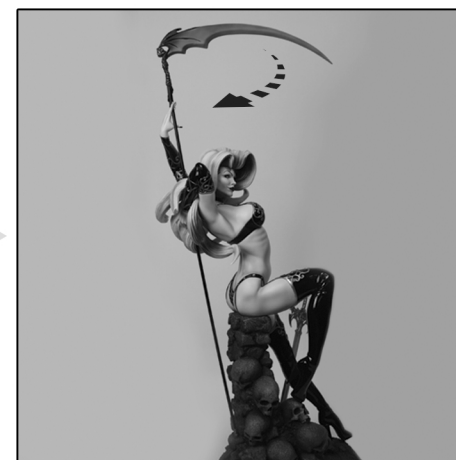
STEP 4

STEP 4: Attach the scythe finial to the bottom of the shaft.



STEP 5

STEP 5: Scythe finial keys into the designated indentation on the base.



NOTE: The scythe has semi-versatile positioning, but it's recommended to keep it in a single position once fully assembled.

ATTENTION: SIDESHOW DOES NOT COVER REPLACEMENT PARTS FOR DAMAGES RESULTING FROM MIS-USE OR MIS-HANDLING!



SIDESHOW

LadyDeath Lady Death is a trademark owned by Lady Death, LLC.

SIDESHOW.COM/Instructions