

ASSEMBLY INSTRUCTIONS

DEADPOOL HEAT-SEEKER PREMIUM FORMAT™ FIGURE

ATTENTION: PLEASE USE CAUTION DURING ASSEMBLY

FOR FURTHER ASSISTANCE:

CALL US (WITHIN U.S.): 1-855-SIDESHOW

CALL US (OUTSIDE U.S.): 1-805-214-2157



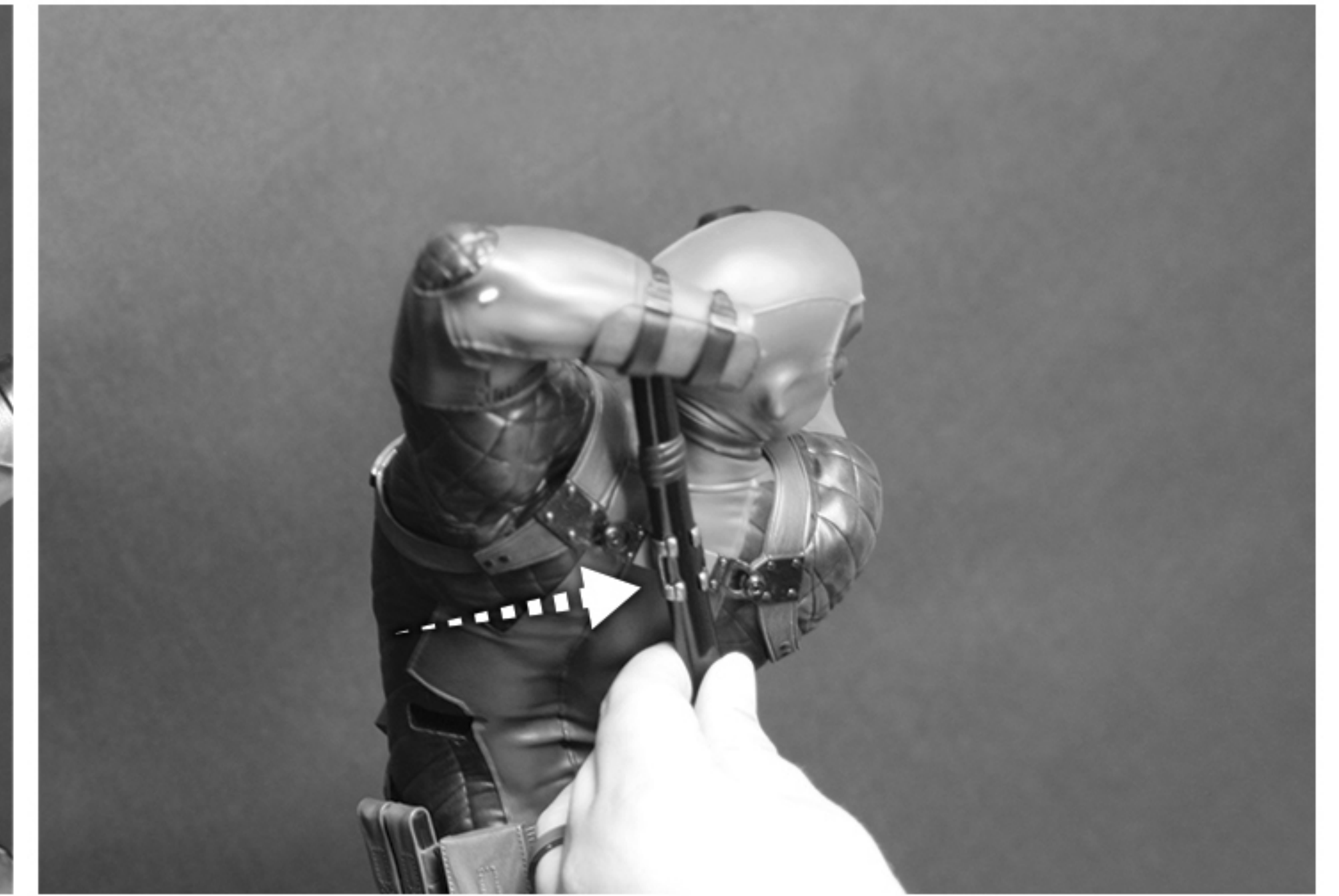
Place base onto flat surface.



Slide Deadpool's foot into base key. Attach 3 fire blast color-coordinated pieces (yellow, black, red) in the magnetized matching color keys on the base.



Attach Deadpool portrait onto neck key.



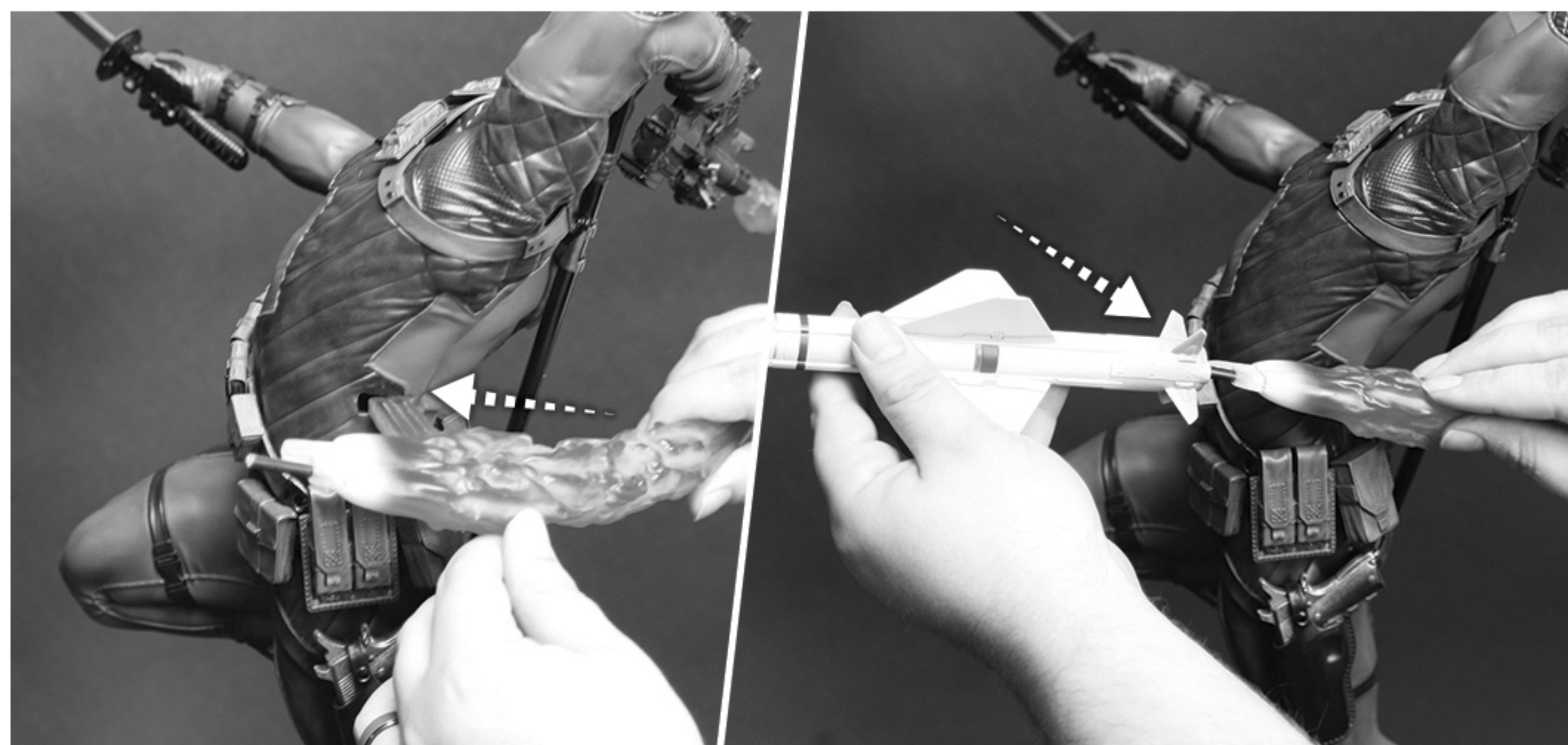
Attach sword scabbard on to back.



Attach bullet fire blast into end of gun barrel. Attach machine gun into figure's left arm.



Attach sword with grenade into figure's right arm.



Attach the rocket tail blast into figure's left side. Attached the rocket onto the tail bast key.



EXCLUSIVE:
Alternate "Red Steel" portrait, and swappable selfie stick/phone (replacement for machine gun)



SIDESHOW

© MARVEL © 2017 Sideshow Inc. Product specifications subject to change.

For more information visit: [SIDESHOW.COM/Instructions](https://www.sideshow.com/instructions)