

ASSEMBLY INSTRUCTIONS

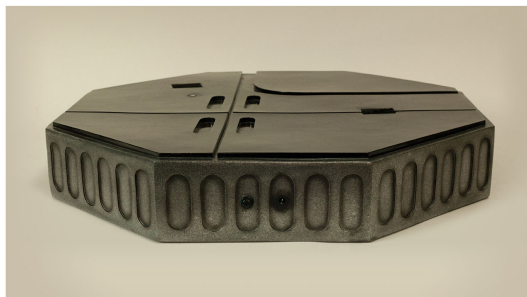
OBI-WAN KENOBI LEGENDARY SCALE™ FIGURE

ATTENTION: PLEASE USE CAUTION DURING ASSEMBLY

FOR FURTHER ASSISTANCE:

CALL US (WITHIN U.S.): 1-855-SIDESHOW

CALL US (OUTSIDE U.S.): 1-805-214-2157



Remove base and lay base on flat surface.



Insert legs into base keys.



Attach torso by fitting it into waist key.



Dress figure with outer tunic and tabard.



Wrap waist sash around tunic and tabard secure with clasps.



Attach utility belt around waist sash and secure with buckle.



Dress and style robe around garments underneath.



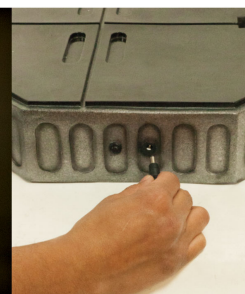
Place portrait onto neck key and style tunic over neck seam.



To insert figures' right arm, lift sleeve and insert forearm into elbow key.



For displaying arm with light saber, repeat previous step with the light saber arm. For light up feature, plug in adapter and power on. Please note: when swapping out arm displays make sure power is off.



SIDESHOW.COM

© & ™ Lucasfilm Ltd. © 2015 Sideshow Inc. Product specifications subject to change.

