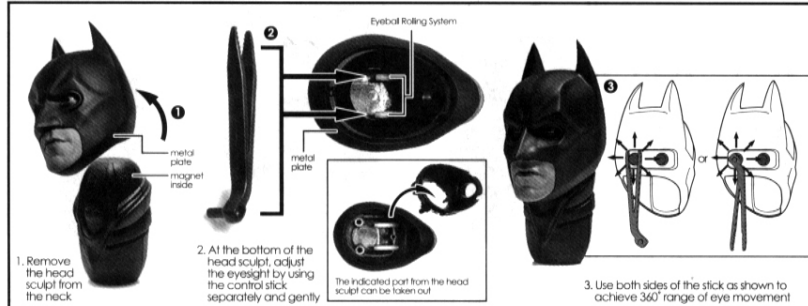


BATMAN

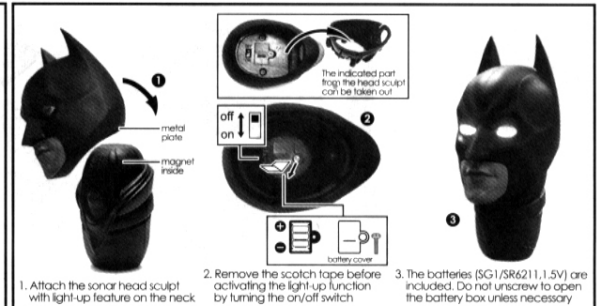
1/4TH SCALE COLLECTIBLE FIGURE

THE DARK KNIGHT RISES

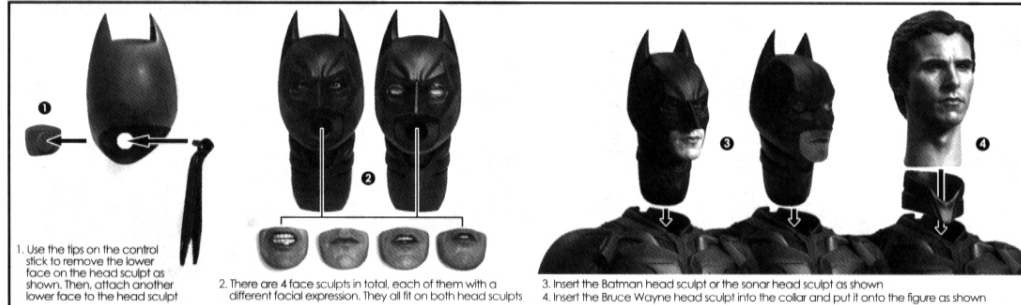
SEPARATE ROLLING EYEBALLS



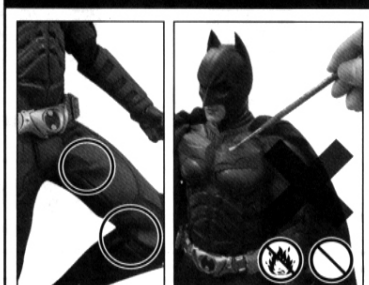
SONAR HEAD LIGHT-UP FEATURE



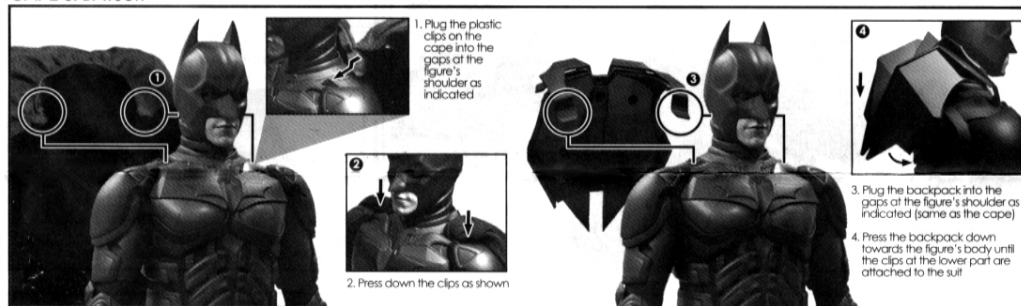
INTERCHANGEABLE FACES & HEAD SCULPTS



WARNING

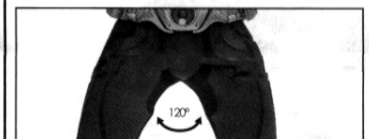


CAPE & BATSUIT



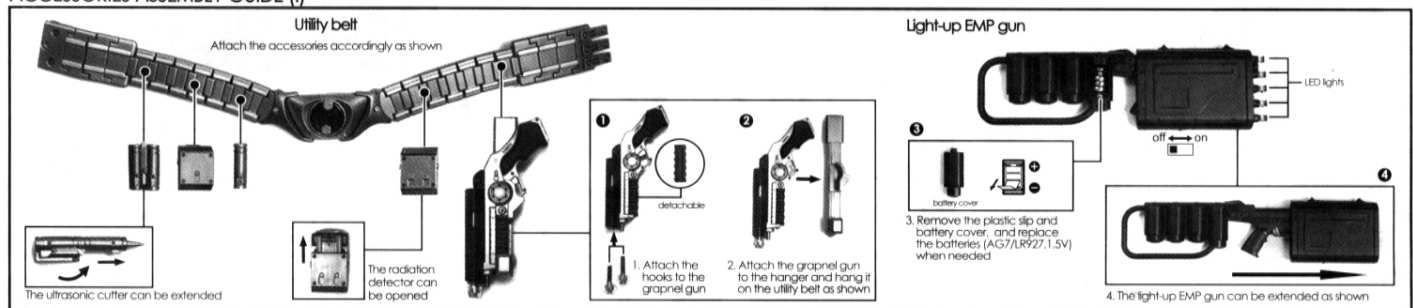
Body Surface Instruction

- The body surface may have stripes after prolonged folding.
- Do not get the body surface in touch with fire or heat to avoid material damage.
- Do not wipe it with thinner, benzene, alcohol or any corrosive materials which could damage the material of the body.

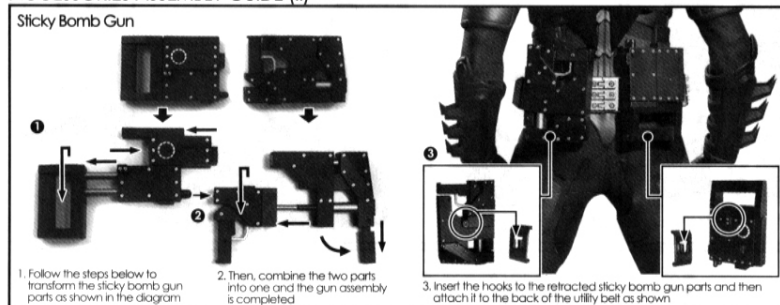


The thighs of the figure can be stretched to the sides within the range of around 120°. Do not overstretch them, otherwise it may damage the batsuit and result in the tearing of its fabric.

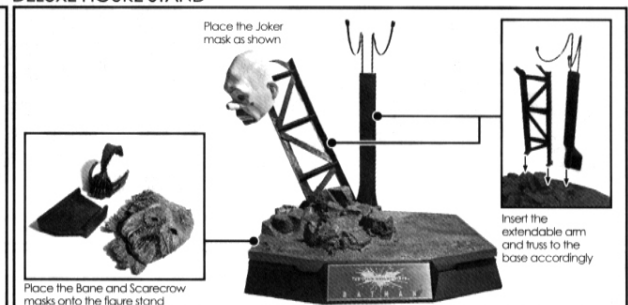
ACCESSORIES ASSEMBLY GUIDE (I)



ACCESSORIES ASSEMBLY GUIDE (II)



DELUXE FIGURE STAND



WARNING

- Do not mix old and new batteries.
- Do not mix alkaline, standard (carbon-zinc) or rechargeable (nickel-cadmium) batteries.
- Batteries installation and parts assembly should be done by an adult.
- Do not look at the LED lights directly; it may be harmful to the eyes.

- Some components are limited in movability and will be damaged if inappropriately twisted or bent with excessive forces.
- Not suitable for children under 36 months due to small parts and magnets which may present choking hazards.
- Some components are rather sharp in shape and fragile, exercise care during unpacking and assembling.
- Figure's head sculpt contains magnets.