



IRON SPIDER
MMS 482 | 1/6TH SCALE COLLECTIBLE FIGURE
INSTRUCTION SHEET

CAUTION II / ご注意 II / 注意 II

A. Use caution when pulling out the eye pieces. Remove the eye pieces and replace them with care. Do not use excessive force. Replace different parts carefully.

B. Do not excessively bend the arms and legs or bend them outward; otherwise, the figure will be damaged. Do not move the figure too fast or bend it too far. Do not touch the figure's hands and joints, or the figure will be damaged. Do not touch the figure's face or other parts.

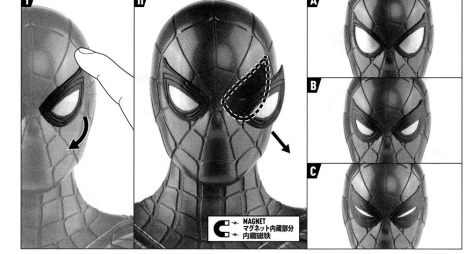
C. Do not expose the figure to direct sunlight for extended amount of time; otherwise, the figure will be damaged. Do not touch the figure's face or other parts. Do not touch the figure's face or other parts.

WARNING
ライトアップに関するご注意
・本製品のライトアップ機能は、電池の電力で動作します。
・電池の電力が弱くなると、ライトアップ機能が正常に動作しない場合があります。
・電池の電力が弱くなると、ライトアップ機能が正常に動作しない場合があります。
・電池の電力が弱くなると、ライトアップ機能が正常に動作しない場合があります。

警告
ライトアップに関するご注意
・本製品のライトアップ機能は、電池の電力で動作します。
・電池の電力が弱くなると、ライトアップ機能が正常に動作しない場合があります。
・電池の電力が弱くなると、ライトアップ機能が正常に動作しない場合があります。
・電池の電力が弱くなると、ライトアップ機能が正常に動作しない場合があります。

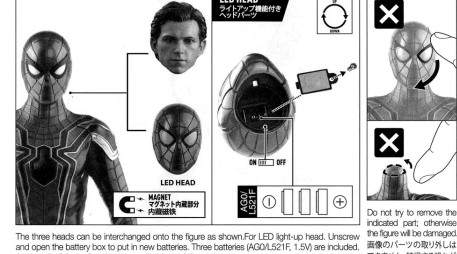
© 2018 Hot Toys Limited. All Rights Reserved.
www.hottoys.com.hk www.hottoys.jp

A. INTERCHANGEABLE EYE PIECES / 差し替え用眼部パーツについて / 可替換眼部配件



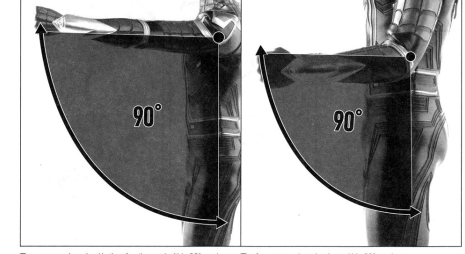
Eye pieces are interchangeable. Be carefully when taking out eye pieces. Do not use excessive force. Remove the eye pieces with care. Do not touch the figure's face or other parts. Do not touch the figure's face or other parts.

B. INTERCHANGEABLE HEAD AND LED LIGHT-UP FUNCTIONS / 差し替え用ヘッドとLEDライトアップ機能について / 可替換头部及LED発光機能



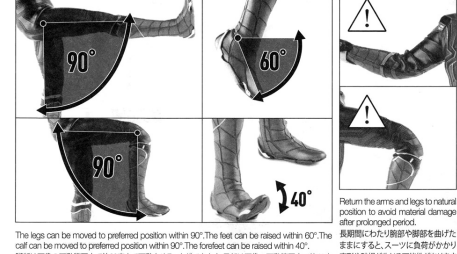
The three heads can be interchanged onto the figure as shown. For LED light-up head, unscrew and open the battery box to put in new batteries. These batteries (AG0/R521F, 1.5V) are included. Activate the light-up function by toggling the on/off switch.

C. ARM MOVEMENT / 腕部の可動について / 手部活動



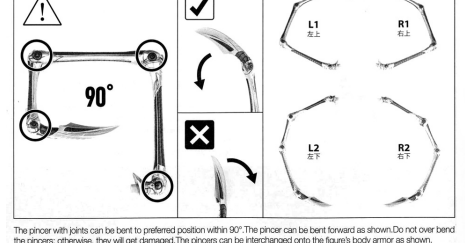
The arms can be raised in the direction and within 90° as shown. The forearm can be raised up within 90° as shown.

D. LEG MOVEMENT / 脚部の可動について / 腿部活動



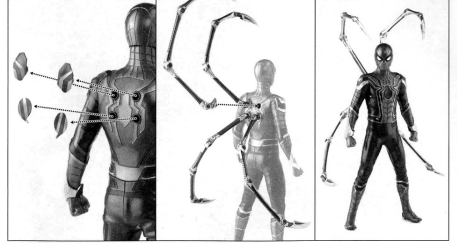
The legs can be moved to preferred position within 90°. The foot can be raised within 40°. The calf can be moved to preferred position within 90°. The foot can be raised within 40°.

E. IRON SPIDER PINCERS / ビンサーについて / 鉄甲蜘蛛爪



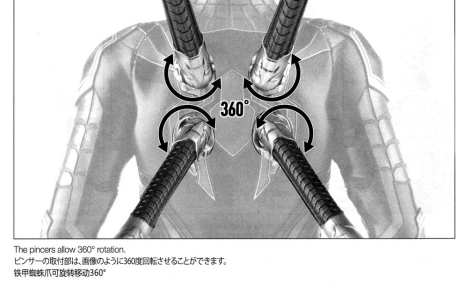
The pincer with joints can be bent to preferred position within 90°. The pincer can be bent forward as shown. Do not over bend the pincers; otherwise, they will get damaged. The pincers can be interchanged onto the figure's body armor as shown.

F. ASSEMBLING IRON SPIDER PINCERS / ビンサーの取付について / 安裝鉄甲蜘蛛爪



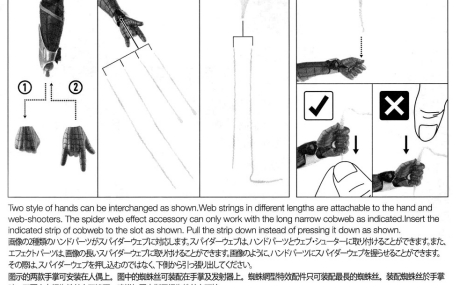
Detach the indicated accessories from the costume. Attach the pincers carefully in the direction as shown. Complete as shown.

G. IRON SPIDER PINCERS MOVEMENT / ビンサーの取付部について / 鉄甲蜘蛛爪活動



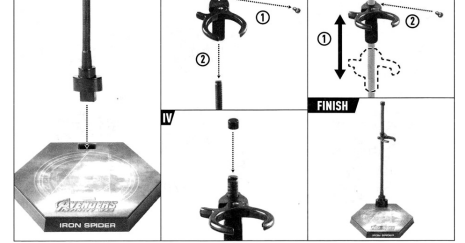
The pincers allow 360° rotation. The pincer's attachment point can rotate 360°.

H. EQUIPPING STRIP OF COBWEB / スパイダーウェブとエフェクトパーツについて / 配装蜘蛛線



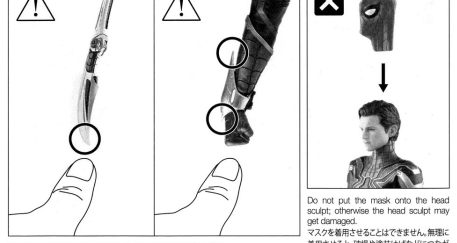
Two style of hands can be interchanged as shown. Web strings in different lengths are attachable to the hand and web-shooters. The spider web effect accessory can only work with the long narrow cobweb as indicated.

I. DYNAMIC FIGURE STAND / 特製台座について / 可动人偶支架



Follow the steps and attach the flexible poles and the figure holding clip to the base. Adjust the clip position before tightening the screw as indicated. Complete as shown.

CAUTION I / ご注意 I / 注意 I



The indicated areas are very sharp. Be careful when handling. Do not pull the mask onto the head sculpt; otherwise, the head sculpt may get damaged.